

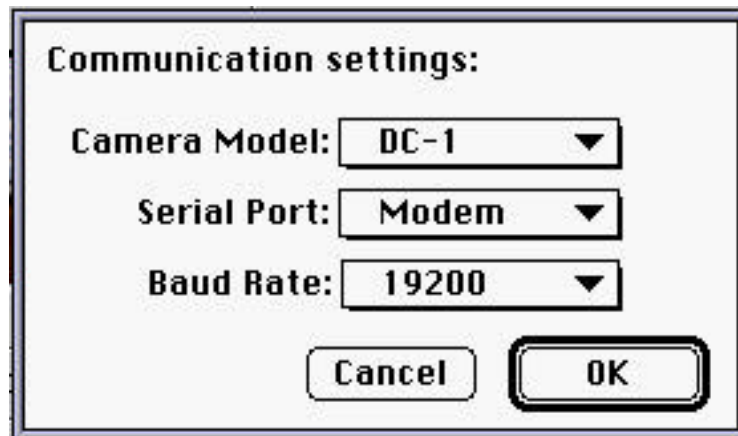
# **Chapter 2 - Tutorial ERRATA**

## **Downloading and Cataloging Images**

**EXERCISE:** Load images from Ricoh camera model RDC-1 via a serial connection.

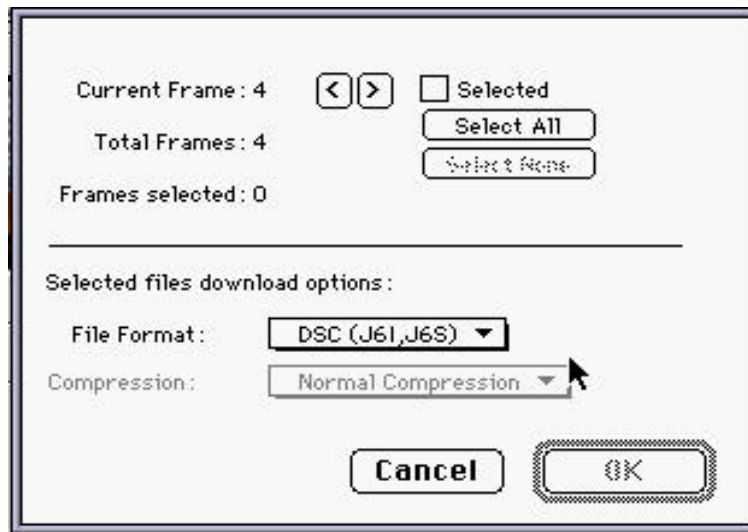
**STEPS:**

1. Open an existing Browser catalog, or create a new one. To create a new Browser catalog, select New from the File Menu. You will then be asked to name the new Browser catalog. After naming the catalog click on Save and you will see the new named catalog open up.
2. Make sure that the camera is connected to one of the Mac's serial ports via the serial cable, and turned off, but the monitor is left on. Select the Load from Ricoh Camera option from the File menu to display the Communications Setting dialog:



3. Select RDC-1 from the Camera Model menu; the port to which the camera is connected from the Serial Port menu; and 19200 baud from the Baud Rate menu, Click OK.
4. Turn the camera on to Record. When the camera screen displays that it is in Record mode, press the Flash/Erase button. A beep will sound.
5. A flashing P1 will display on the camera monitor. If you move the Select slider left (REV), the P1 will change to P8. Press the Flash/Erase button again, the press the Start button. A beep will sound.
6. When SELECT displays on the camera screen, move the Select slider right to choose AUX. Press the Start button.

7. The camera will continue to display SELECT, but will now also offer a choice of baud settings. Use the Select slider to choose 19200BPS, then press the Start button. Another beep will sound.
8. The above action must be performed in the space of about one minute in order to open the communication channel. If you take too long, a time-out error will occur and you will need to start again. Once the communication channel is open, the following dialog will display:



9. The number of the frame currently selected, the total number of frames, and the quantity of frames selected will be displayed. Use the arrow keys on the computer screen to scroll through the frames.
10. The frames currently selected will display on the camera's screen. When you see an image you would like to download, click on the checkbox to the right of the arrow keys to select it. You may also use the Select All or Select None options.
11. Use the File Format pop-up menu to select a format for the files you wish to download. Options are: DSC (J6I, J6S); PICT; TIFF; and JPEG. DSC is the preferred option as it is the format native to the camera, compact, and therefore relatively fast to download. If you select PICT, TIFF or JPEG, downloading the files will take longer as they must first be converted from DSC format. In addition, more memory will be required to download the files, and links will be lost between images and sounds.

NOTES: Regardless of the file format you select, sound files will be downloaded in J6S format. Note also that the Compression pop-up menu will be enabled only if you have selected JPEG as the file format. If so, you can either choose Best Compression, Normal Compression or Best Quality from the pop-up menu.

12. Once you have selected a file format, click OK. A standard dialog will display so you can choose a folder in which to save the downloaded files.



13. Make your choice and click the long circled folder ID box. The Browser will refer to this folder in order to display preview icons of the downloaded files in the current catalog.

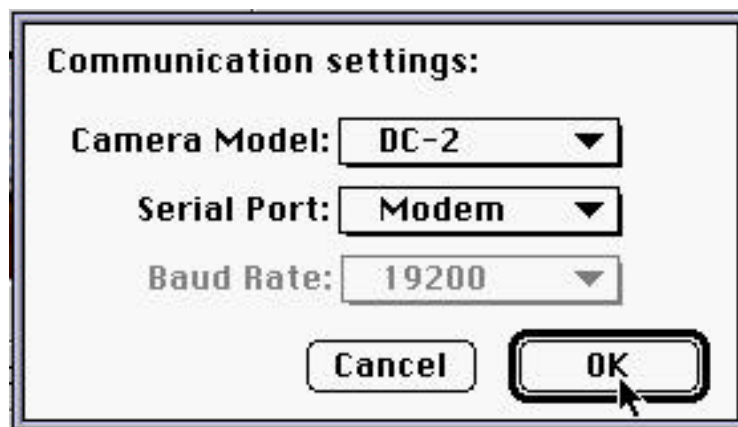
# **Chapter 2 - Tutorial ERRATA**

## Downloading and Cataloging Images

**EXERCISE:** Load images from Ricoh camera model RDC-2 via a serial connection.

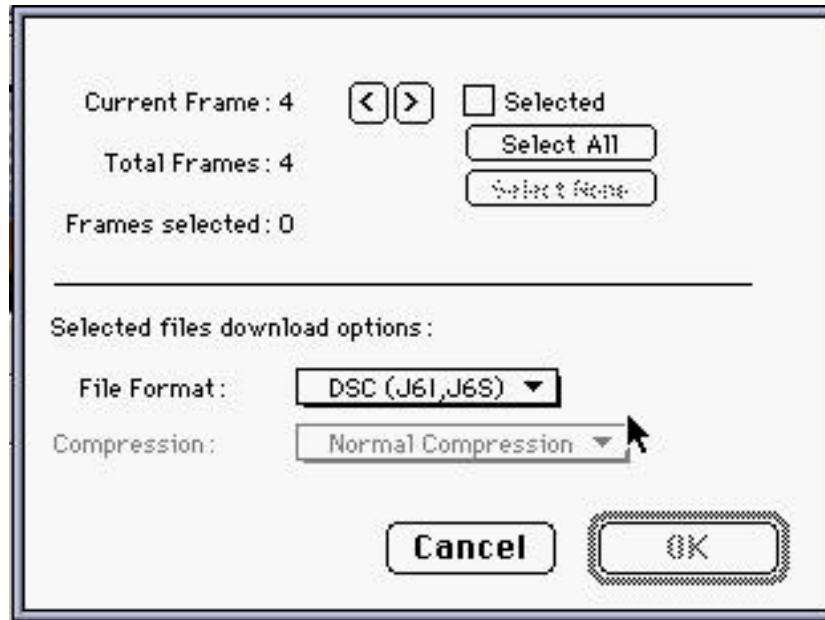
**STEPS:**

1. Open an existing Browser catalog, or create a new one. To create a new Browser catalog, select New from the File Menu. You will then be asked to name the new Browser catalog. After naming the catalog click on Save and you will see the new named catalog open up.
2. Make sure that the camera is connected to one of the Mac's serial ports via the serial cable, and switched off but the monitor left on. Select the Load from Ricoh Camera option from the File menu to display the Communications Setting dialog:



3. Select RDC-2 from the Camera Model menu; the port to which the camera is connected from the Serial Port menu. The Baud Rate menu will be grayed-out as the RDC-2 automatically selects the correct baud rate (usually 57600 baud)
4. Turn the camera on the PC Position, then click OK to close the dialog.

5. The connection should now be established, and the following dialog will display:



6. The number of the frame currently selected, the total numbers of frames and the quantity of frames selected will be displayed. Use the arrow keys to scroll through the frames.
7. The frame currently selected will be displayed on the camera's screen. When you see an image you would like to download, click on the checkbox to the right of the arrow keys to select it. You may also use the Select All or Select None options.
8. Use the File Format pop-up menu to select a format for the files you wish to download. Options are: DSC (J6I, J6S); PICT; TIFF; and JPEG. DSC is the preferred option as it is the format native to the camera, compact, and therefore relatively fast to download. If you select PICT, TIFF or JPEG, downloading the files will take longer as they must first be converted from DSC format. In addition, more memory will be required to download the files, and links will be lost between images and sounds.

NOTES: Regardless of the file format you select, sound files will be downloaded in J6S format. Note also that the Compression pop-up menu will be enabled only if you have selected JPEG as the file format. If so, you can either choose Best Compression, Normal Compression or Best Quality from the pop-up menu.

9. Once you have selected a file format, click OK. A standard dialog will display so you can choose a folder in which to save the downloaded files.



10. Make your choice and click the long circled folder ID box. The Browser will refer to this folder in order to display preview icons of the downloaded files in the current catalog.

# **Chapter 2 - Tutorial ERRATA**

## **Add Ricoh PC Card Files**

The ATA compatible PC card should only be used for quickly getting images out of the camera. These images should be copied to a folder on your hard drive. The contents of the card should not be changed.

Insert the card in the PCMCIA slot on a Power Book or PCMCIA reader. When the card displays on your desktop, copy it to your hard drive. An untitled folder which contains files in the camera's native format (Ricoh's standard DSC format) will be created. Files will be named as follows:

**Images: Rnnnnnnnn.J6I** (the I at the end of the suffix denotes an image file)

**Sounds: Rnnnnnnnn.J6S** (the S at the end of the suffix denotes a sound file)

**Movies: Rnnnnnnnn.Movie** (denotes a movie file)

**Rnnnnnnnn.REL** - REL at the end of the file name specifies that the file contains the catalog/index information. This is a list of the frames on the camera and information about and links between them.

Once the files are on the Mac and have been cataloged in the Browser, you no longer need the REL file. You could now delete it, as well as rename the camera format files, however we do not recommend doing so as it will prevent the files from being used by any other software that understands DSC camera file formats.