



## Overview

The software suite that comes with your camera is specifically designed for your Ricoh RDC-300Z digital camera so you may get the most out of your images. Follow the steps below to get started quickly.



*Ricoh PhotoStudio Lite allows you to easily download and upload your images to and from your camera. PhotoStudio Lite also allows you to easily edit and enhance your digital images and save them in a variety of formats.*

## Installation for Windows 95/98\*

1. Insert the RDC-300Z CD into your CD-ROM drive.
2. Click the Start menu and select Run. Click on Browse, then click on Setup.exe, then click open.
3. Click on OK to begin installation.
4. Follow the on screen prompts.
5. To run PhotoStudio Lite, click on Start, Programs, PhotoStudio Lite.

\*If you are running Windows 3.1x, you must install Win32s version 1.3 or later version before installing PhotoStudio Lite. You will find the Win32s installation program in the Win32s folder on the CD.

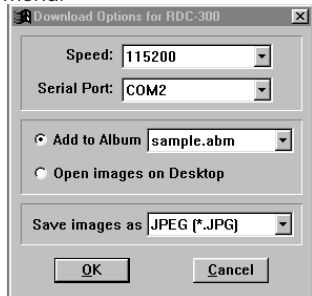
## Downloading images from your RDC-300Z

### Connecting the camera to your computer

1. Turn the camera's power off by closing the display.
2. Open the terminal cover and connect the small end of the supplied serial cable into the camera's serial port.
3. Turn off your computer's power.
4. Connect the other end of the cable to an available COM port on your PC.
5. Turn on the camera's power.
6. Turn on your computer.
7. Slide the camera's Play/Record switch to the Play position.

### Open Ricoh PhotoStudio Lite

Close the "Project dialog box" and select [Download Ricoh Files] from the File menu.



The Download Image dialog box will appear. Select the correct serial port and download speed for your system.

Select if a file is to be added to an album or opened on the desktop.

Select the desired format the file should be saved as.

Click [OK].

The current image to be downloaded appears on the camera's LCD.

To download this image, click on the Current Frame check box.

Use the arrow buttons ( << and >> ) to see the other images currently stored in the camera.

Use the Current Frame check box to select any other images to be downloaded.

The Select All button can also be used to download all images stored in the camera. (Images are not deleted from the camera when downloaded.)

When the desired images are selected, click on [OK] to start downloading the images.

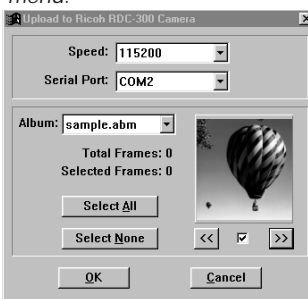
## Uploading images from your RDC-300Z

### Connecting the camera to your computer

1. Turn the camera's power off.
2. Open the terminal cover and connect the small end of the supplied serial cable into the camera's serial port.
3. Turn off your computer's power.
4. Connect the other end of the cable to an available COM port on your PC.
5. Turn on the camera's power.
6. Turn on your computer.
7. Slide the camera's Play/Record switch to the Play position.

### Start Ricoh PhotoStudio Lite

Close the "Project dialog box" and select [Upload Ricoh Files] from the File menu.



The Upload Image dialog box will appear.

Select the correct serial port and download speed for your system.

Select the desired album the images are in. The current image to be uploaded appears in the preview window.

To upload this image, click on the Current Frame check box.

Use the arrow buttons ( << and >> ) to see other images currently in the album.

Use the Current Frame check box to select any other images to be uploaded.

The Select All button can also be used to upload all images in the album. (Images are not deleted from the album when uploaded.)

When the desired images are selected, click on [OK] to start uploading the images.

Images must be at a resolution of 640x480 and in JPEG file format in order to be uploaded.

## DU-3

DU-3 is a camera control utility for uploading and downloading images. DU-3 allows the camera's primary functions to be controlled directly from your computer. It enables the creation of photo albums or catalogs of images.

### Installation

1. Insert your RDC-300Z CD into your CD-ROM drive.
2. Click the Start menu and select Run. Click on Browse, then double-click the DU-3 folder.
3. Double click in the folder for the version of Windows you are running.
4. Click on Setup.exe, (located in the "Disk 1" folder for Windows 95) then open. Click on OK to begin installation.
5. Follow the prompts in the installer.



Enroute Imaging's QuickStitch allows you to automatically stitch images together both horizontally and vertically to create wide angle panoramas.

### Installation

1. Insert your Bonus Software CD into your CD-ROM drive.
2. Click the Start menu and select Run. Click on Browse, then double-click on the QuickStitch folder.
3. Click on Setup.exe, then click open. Click on OK to begin installation.
4. Follow the prompts in the installer.