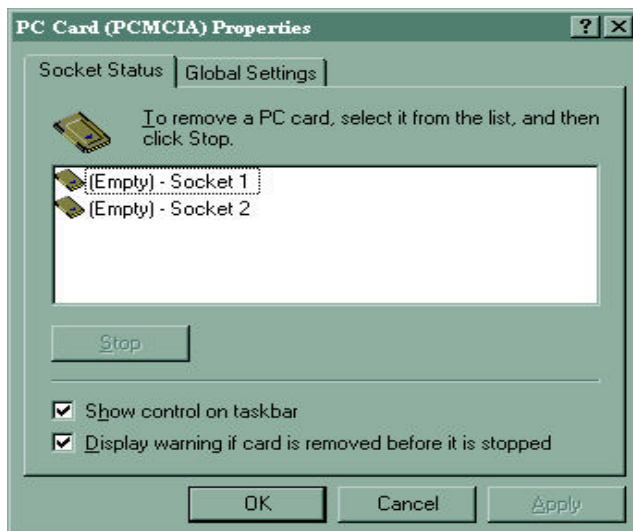
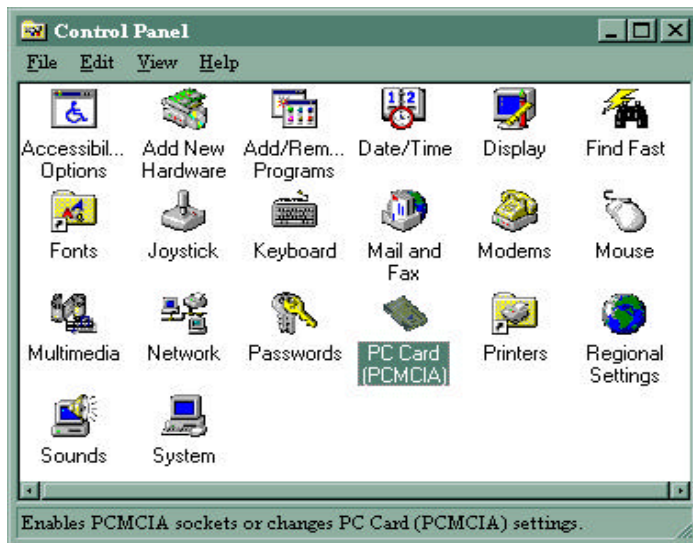


THE NAME TO KNOW
RICOH® *WINDOWS 95 DRIVER INSTALLATION*

The following are instructions to install Windows 95 drivers onto a computer for the first time.

- Ensure that there is not a PC Card in any slot of your PCMCIA Card reader.
- Go to **Control Panel** and check for an icon for “**PC CARD PCMCIA**” (see below). If this is not listed, please go to **Add New Hardware** and follow the instructions to add the PC Card slot to your computer.

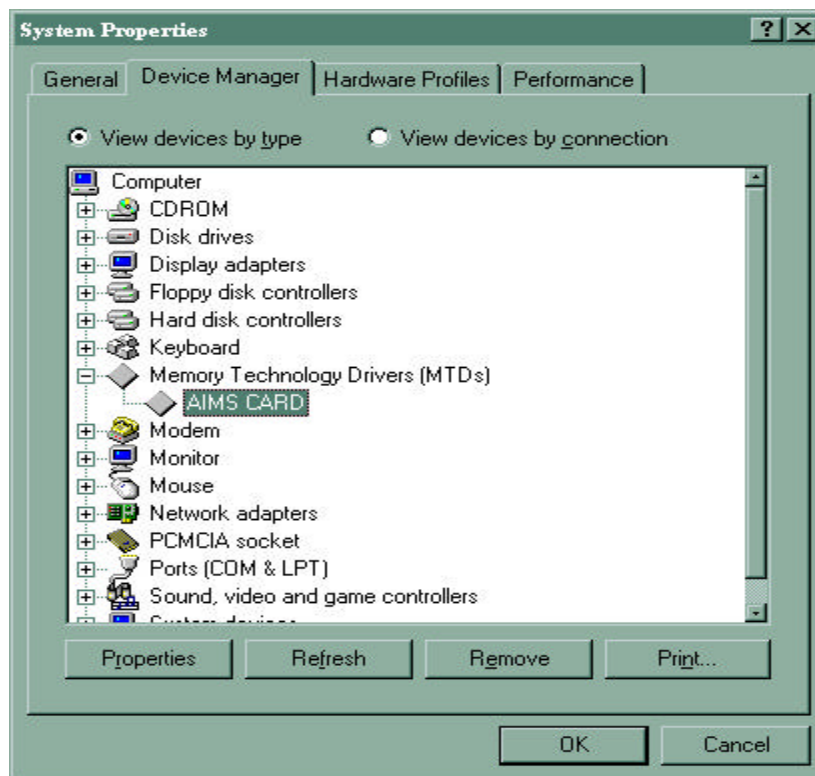


- Insert the Ricoh Aims Card into the PCMCIA Slot of your computer.
- Windows 95 will detect new hardware and prompt you for the drivers. Please instruct the computer to go to the floppy drive and installation should proceed.

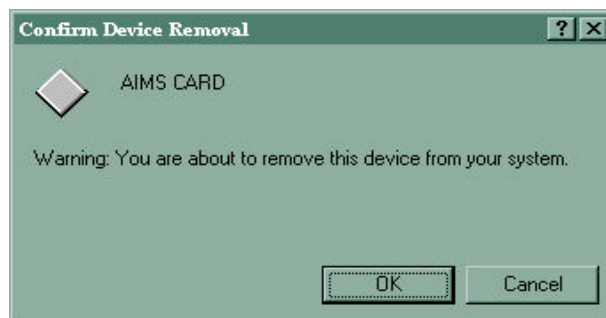
THE NAME TO KNOW™
RICOH® ***WINDOWS 95 BETA DRIVER REMOVAL***

Please follow the instructions below to remove any “Beta Version” of Windows 95 driver software prior to installing the final drivers.

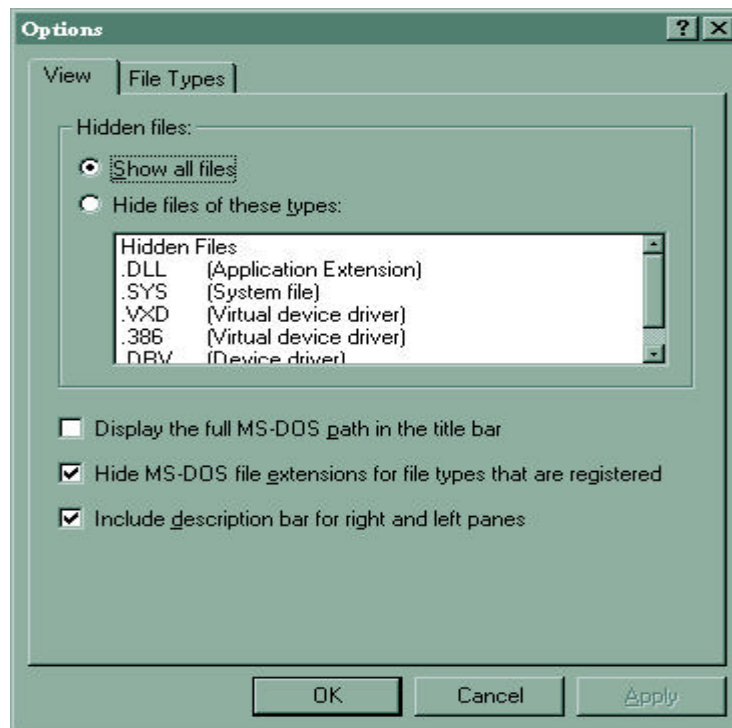
- Insert the Ricoh Aims card into the PC Card slot of your computer. Please open the *Control Panel*, *System* and go to *Device Manager* (see below).



- Remove the old driver “AIMS CARD”.



- From Windows Explorer, delete the following files:
 - C:\WINDOWS\SYSTEM\IOSUBSYS\aims.mpd
 - C:\WINDOWS\INF\oemX.inf
 - These will be a hidden file. In order to see these type of files, go to **View** and then **Options** to show hidden files (see below).



- There may be several **oemX.inf** files (i.e. oem0.inf, oem1.inf etc.)
- Remove only the Ricoh Aims Driver **oemX.inf** files. Double click and open with Notepad or Word to view file.
- Reboot