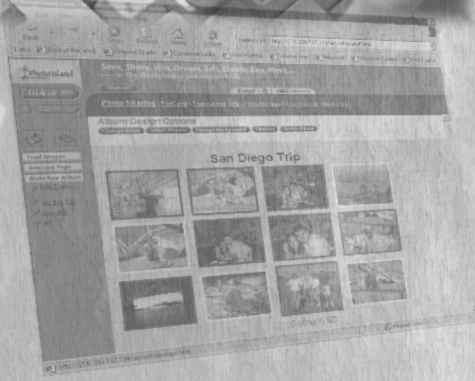


**RICOH®**

# ***RDC-5300***

**DIGITAL CAMERA**

# Software Manual







# RDC-5300 Software Manual



Congratulations on your purchase of the Ricoh RDC-5300 digital camera. This camera, in conjunction with its included software, will let you do more with you images than you ever imagined.

## Table of Contents:

Technical Support .....	3
System Requirements .....	3
CD contents Windows.....	4
CD contents Macintosh.....	5
PhotoBase for Windows .....	6
PhotoBase for Macintosh .....	8
PhotoStudio for Windows .....	10
PhotoStudio for Macintosh .....	12
PhotoPrinter for Windows and Macintosh .....	14
PhotoFantasy for Windows and Macintosh .....	16
PhotoMontage for Windows and Macintosh .....	18
PhotoIsland for Windows and Macintosh.....	20
Ricoh Camera Utility for Windows.....	24
Ricoh Camera Utility for Macintosh .....	25



Hi! My name's Vince Pixel and I will be giving you a guided tour through this software manual. I will give you helpful hints, and show you some advanced features that will help you make the most of you RDC-5300's images.

## Note:

Some of the software programs on the CD differ depending on whether they are for Windows or Macintosh computers. Use the symbols below to determine what software is compatible with your computer.



This symbol represents Microsoft Windows 98 computers



This symbol represents Macintosh Computers

## Tech support

Free tech support is available for 45 days from your first call to the numbers below. When you call, please be at your computer and ready to repeat the problem you are having. We will require your camera's serial number located on the bottom of your camera.

## Software and installation issues

Phone: 510-440-9901 M-F 8:30AM - 5:30PM (PST)

Fax: 510-440-1270

Email: [support@arcsoft.com](mailto:support@arcsoft.com)

## Camera operation and file transfer issues

Phone: 800-459-3968 M-F 6:00 AM - 9:00 PM CST or 9:00 AM to 6:00 PM Sat - Sun.

FaxBack System: 800-442-8796

Online FAQ's and drivers: [www.ricohcpg.com](http://www.ricohcpg.com)

Email: [techsupport@ricohcpg.com](mailto:techsupport@ricohcpg.com)

## Minimum System Requirements

Some software may work on operating system versions other than listed below. The listed minimums are required for full compatibility with the RDC-5300 camera. For updated information on system compatibility, visit our web site at [www.ricohcpg.com](http://www.ricohcpg.com).



Windows

- 486-based PCs (Pentium recommended)
- Windows 98 or NT 4.0
- 16 MB RAM (32 MB RAM recommended)
- 120 MB free hard disk space
- CD-ROM drive
- Mouse

### USB Requirements

Windows 98 is required for USB file transfer to work. The driver cannot be used with the USB ports connected via expansion devices such as PCI bus. Ensure your USB port is operating properly prior to use.



Mac

- System 7.6 or better
- 32 MB RAM (64 MB RAM recommended)
- 80 MB free hard disk space
- CD-ROM drive
- Mouse

### USB Requirements

Apple iMac, PowerMacintoshG3 (pre-installed with operating factory USB port.)  
Operating System : MacOS 8.5 or later (File Exchange should be active.)



# On The Disk

The software contained on your CD is specially designed to operate with your RDC-5300 digital camera. Please read the following information prior to installing your software to familiarize yourself with the contents of the CD.

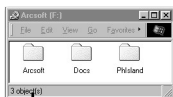


Review the "readme" files associated with each program for more information and trouble shooting.

## Software CD Contents and Installation - Windows partition:

### Software CD

#### ArcSoft



This folder group contains:

The ArcSoft setup folder for installing the ArcSoft Software Suite

A document folder that contains the software help files in PDF format and a PDF reader

A PhotoLand folder that contains utilities to make using PhotoLand easier.



To install the ArcSoft Software Suite, open the Arcsoft folder and double-click on the Setup.exe icon.

A Set-up wizard will run that will allow you to select the Software Suite programs you wish to install.



PhotoBase, an easy-to-use program that organizes albums of multimedia files

PhotoStudio, a full-featured, easy to use image editor.

PhotoMontage lets you create a "mosaic" of a single image from a library of images.

PhotoPrinter allows you to print multiple images on a single sheet.

PhotoFantasy allows you to place personal images into background templates.

PhotoLand software lets you make free personal photo albums on the Web.

#### Camera Utility



This folder contains Ricoh Camera Utility, a simple serial file transfer utility for your RDC-5300. Double-click on the Setup.exe icon to install. This program is not required to transfer files if you have installed PhotoBase.

#### CD Manual

The HTML version of this manual. Use your Internet browser to open the manual.

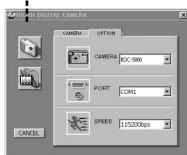
#### TWAIN Drivers



This folder contains the TWAIN drivers required to use the camera as a TWAIN device.



Double-click on the Setup.exe icon on disk one. A Set-up wizard will guide you through the installation.



To use the RDC-5300 as a TWAIN device. You must use software that supports TWAIN.

When the camera is properly connected via a Serial connection, you may access the camera using the "Acquire" command from your software.

The dialog box shown to the left will then appear, enabling you to access the camera's images.

#### USB Drivers

This folder contains the drivers required to connect the camera to a USB port. The files DO NOT install from this folder. You must connect the camera to a properly equipped USB port and allow the Windows Hardware Wizard to install the drivers. Refer to instructions on page 7 of this manual for detailed instructions.

### Software Licensing Agreement

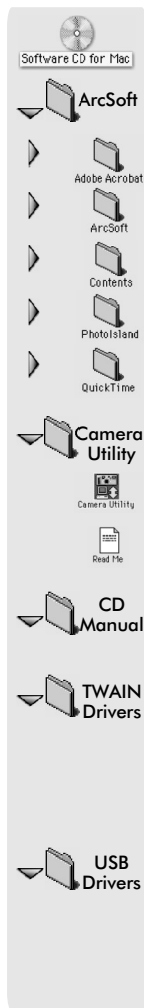
The following is a legal software license agreement between you, the software end user, and the companies of Ricoh corp. and ArcSoft, Inc. Carefully read this license agreement before using the product. Using the product indicates that you have read this license agreement and agree to its terms. If you do not agree to the terms, promptly return the package to the place where you purchased it within 10 days of the date you acquired it for a full refund. Grant of License. This license permits you to use one copy of the software included in this package on any single computer. For each software licensee, the program can be in use on only one computer at any given time. The software is in use when it is either loaded into RAM or installed into the hard disk or other permanent memory. A multi-seat license permit from ArcSoft and Ricoh is required if the program is going to be installed on a network server for the sole purpose of distribution by other computers, or if the program is going to be installed on and used by more than one computer. Copyright. The software contained in this package is owned by ArcSoft and Ricoh and is protected by United States copyright laws, international treaty provisions, and all other applicable national laws. The software must be treated like all other copyrighted materials (e.g. Books and musical recordings). This license does not allow the software to be rented or leased, and the written materials accompanying the software (if any) may not be copied. Limited Warranty. ArcSoft, Inc. And Ricoh, warrants that the software contained herein will perform substantially in accordance with the accompanying documentation. No Other Warranties. ArcSoft and Ricoh disclaims all other warranties, either express or implied, including but not limited to



# On The Disk

The software contained on your CD is specially designed to operate with your RDC-5300 digital camera. Please read the following information prior to installing your software to familiarize yourself with the contents of the CD.

## Software CD Contents and Installation - Macintosh partition:



The ArcSoft folder contains the files necessary to install the ArcSoft Software Suite listed below onto your hard drive. You will also find a folder that contains Adobe Acrobat and Quicktime utilities if you require them. A Photoland folder that contains a link to the Photoland Web site.



PhotoBase, an easy-to-use program that organizes albums of multimedia files  
PhotoStudio, a full-featured, easy to use image editor.  
PhotoMontage lets you create a "mosaic" of a single image from a library of images.  
PhotoPrinter allows you to print multiple images on a single sheet.  
PhotoFantasy allows you to place personal images into background templates.  
Photoland software lets you make free personal photo albums on the Web.

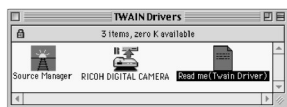


To install PhotoStudio and/or PhotoBase, you need to first select the language you wish to use. Open the programs folder, select the language, and click on the installer icon. The other Software Suite programs may be installed by just clicking on their installer from the ArcSoft folder.

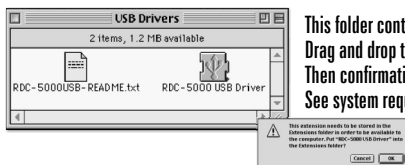
This folder contains Ricoh Camera Utility, a simple serial file transfer utility for your RDC-5300. Double-click on installer icon to install the program to your hard disk. Please read the program's "readme" file for important updates and installation troubleshooting..

The HTML version of this manual. Use your Internet browser to open the manual.

This TWAIN driver allows applications that support System 7.6(or later) to acquire images directly from a Ricoh digital camera.



Copy the TWAIN folder to the Preferences Folder in the System Folder. If you already have a TWAIN compliant device driver installed, open the TWAIN folder, and copy the RICOH DIGITAL CAMERA file to the TWAIN folder on your hard disk.



This folder contains the drivers required to connect the camera to a USB port. Drag and drop the icon "RDC-5000 USB Driver" into the "System folder". Then confirmation dialog box appears and copy it to "Extensions Folder". See system requirements on page 3 prior to installation.

implied warranties of merchantability and fitness for a particular purpose, with respect to the Software, the accompanying written materials, and any accompanying hardware (if any). No Liability for Consequential Damages. In no event shall ArcSoft, Ricoh or its suppliers be liable for any damages whatsoever (including but not limited to damages for loss of business profits, business interruption, loss of business information, or any other pecuniary loss) which results from an inability to use this software, even if ArcSoft, Inc and Ricoh have been advised of the possibility of such damages. Because some states/jurisdictions do not allow the exclusion or limitation of consequential or incidental damages, the above limitations may not apply to you. U.S. Government Restricted Rights. The Software and documentation are provided with Restricted Rights. Use, duplication, or disclosure by the U.S. Government is subject to restrictions as set forth in subparagraph (c)(1)(ii) of the Rights in Technical Data and Computer Software clause at DFARS 252.227-7013 or subparagraphs (c)(1), (2), and (3) of the Commercial Computer Software - Restricted Rights at 48 CFR 52.227-19, as applicable, and any amendments thereto. The manufacturer is ArcSoft, Inc., 46601 Fremont Blvd., Fremont, CA 94538. If this product was purchased in the United States, this Agreement is governed by the laws of the state of California; Otherwise, local laws may apply.



# ArcSoft photo Base™

ArcSoft PhotoBase lets you organize and categorize your images, sound, movies and just about any other type of file on your computer. It is easy to use, but very powerful. Now you will always know exactly where every image on your computer is and be able to retrieve it with just a click of the mouse.



You can drag-n-drop images within an album to re-arrange them and change their order. You can also delete the images you don't want.

Drag your images to an icon on the hot-link bar and launch that program instantly. Or double click the icon to run apps fast. Right click on the hot-link bar to set up your own apps.

PhotoBase uses Albums to organize and categorize your images. You can have as many albums as you like - each with a different name so you can group your pictures by subject. Every image in an album is represented by a "thumbnail" or small picture of your original image. Once you have created an album, just double click on a thumbnail, and the image will open up full size, ready for editing.



Use PhotoBase's text fields to give each of your images a unique name or description. You can then use the search function to find your images based on subject, name, or even the date they were taken.

Use the menu bar for fast access.



Access / create albums

Upload / download  
RDC-5300 images

Auto fix button  
Sort images  
Print album

E-mail



The add files icon opens up an explorer window so you can get files from any drive on your computer with just a few clicks.



If you need more information, use PhotoBase's powerful context sensitive on-line help. There is even an electronic manual on your CD that you can print-out if you want a hard copy.

The presentation drop-down lets you create self running slide shows of your images to send to friends via e-mail or burn to a CD, all from within PhotoBase.



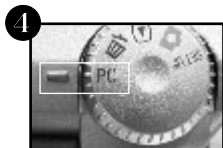
# Downloading Images from your camera with PhotoBase.



In the Windows version of PhotoBase, you can bring images from your RDC-5300 digital camera directly into an album. You may use either a USB or Serial connection. Consult your computer's documentation to see what type of connections your computer supports.



Turn your camera's power off.



Turn the mode dial to "PC"



Turn your camera's power on.



If you have a USB port on your computer, connect the USB cable to your camera.



If you do not have a USB port, connect the Serial cable to your camera.



Depending on the type of cable used, connect the other end to your computer.

6 Select the download camera icon from the PhotoBase toolbar.



Select the type of connection you have from the options box.



## USB connection

A drive browser will appear.



Navigate to the camera's folders, and select your images.



## Serial connection

Select the Com port your camera is connected to.



Use the arrow keys and select the images you wish to upload

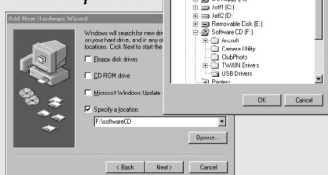


The first time USB is used, a hardware wizard will appear.



At the first screen, click "next". Select the search option in the next screen. Insert your Software CD into your CD-ROM drive.

Click the "specify location" option and navigate to the USB driver folder on your CD.



Windows will locate the camera drivers. Click "next" to have the wizard assign the camera a drive letter. This will occur twice. Click "finish".



You only have to do this once. The next time you plug in your camera, it will be assigned drive letters.



PhotoBase lets you organize and categorize your images. It is easy to use, but very powerful. Now you will always know exactly where every image on your computer is and be able to retrieve it with just a click of the mouse.



PhotoBase uses Catalogs to organize and categorize your images. You can have as many catalogs as you like - each with a different name so you can group your pictures by subject.

Every image in an album is represented by a "thumbnail" or small picture of your original image.

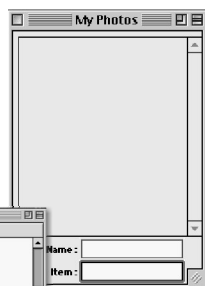
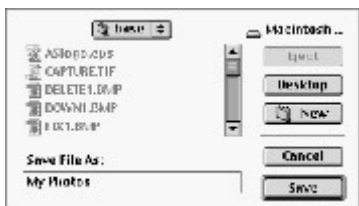
Once you have created a catalog, just double click on a thumbnail, and the image will open up full size, ready for editing.

When PhotoBase starts, you are presented with an options box. Select "new catalog" to create a new catalog for your images.

A browser will appear that allows you to give your new catalog a name and specify the location you wish to keep it.

Click "save" to have your new, empty, catalog appear.

If you have previously created a catalog, you want to access, use the "open catalog" option instead. Selecting "cancel" will close the options box and let you work freely in PhotoBase.



Now use "Finder" to browse to a folder that contains the images you want to place in your catalog. Then simply select the image files and drag them into your catalog.



By double-clicking on an image in your catalog, the image will open in PhotoStudio, if you have it installed.



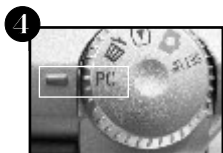
# Downloading Images from your camera with PhotoBase.



Transferring images directly into a PhotoBase catalog is only possible if your computer supports USB. Install the USB drivers prior to attempting to access your camera's image files. If you do not have USB, you may access your camera's images using a Serial connection and the Ricoh Camera Utility included on your CD.



Turn your camera's power off.



Turn the mode dial to "PC"



Turn your camera's power on.



If you have a USB port on your computer, connect the USB cable to your camera.



If you do not have a USB port, connect the Serial cable to your camera.



If you are using a Serial connection, connect the serial adapter to the cable.



Depending on the type of cable used, connect the other end to your computer.

Depending on the type of connection you have used, follow the instructions below for bringing your images into your computer.



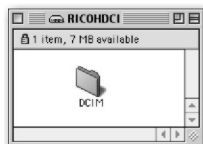
Install the USB driver by dragging the "RDC-5000 USB Driver" icon from the USB folder on your CD into the "System folder".

RDC-5000 USB Driver

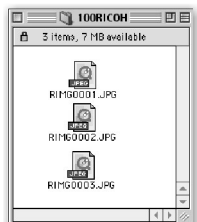


Allow the driver to be placed in the "Extensions Folder".

When the drivers are installed, and the camera is connected via USB as described above, two drives (internal memory and SmartMedia) are mounted on the desktop of your Macintosh.



Open a new or existing catalog in PhotoBase. Use "Finder" to select the camera drive icon on your desktop that contains the files you wish to add. Navigate through the "Dcim" folder, and open the "RICOH" folder. Select the files you wish to add and drag them into the catalog.

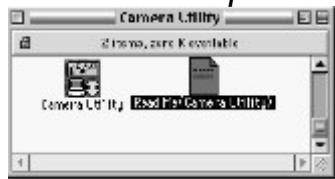


Serial file transfer requires the installation of Ricoh Camera Utility.

Refer to page 5 for installation instructions.

Refer to page 25 for downloading procedures.

## Ricoh Camera Utility



When using USB, your camera will mount on your desktop as two drives. One drive is for the on-board memory, and the other is for the SmartMedia card. Access the camera just as you would a CD or disk.



ArcSoft

# photo Studio™

PhotoStudio is a full-featured, easy-to-use image editing software program. It allows you to acquire, enhance, retouch and output full-color images for publication, presentation and the Internet with a wide collection of editing tools, special effects and enhancements.



PhotoStudio is automatically linked with PhotoBase.

That means when you double click on any image in PhotoBase, the image will open up in PhotoStudio, ready for editing.

Depending on the type of editing you want to do, there are a wide variety of tools that will suite your needs.

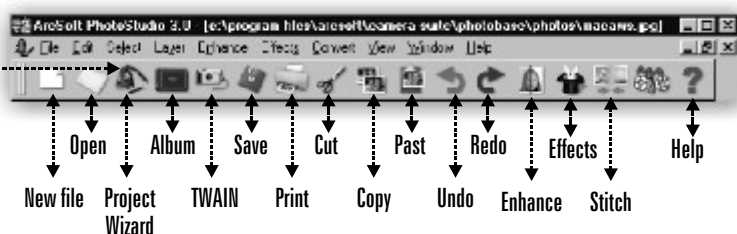
You may add or remove the visible tools by going to the "view" option on the menu bar.



The tool palettes in PhotoStudio have "docking" capabilities. That means you can grab them and drag them anywhere you want, to customize your view.

## The Quick Access Bar takes you right to primary functions

The Quick Access Bar has icons that instantly evoke the most popular commands in PhotoBase with just a single click.



The project wizard makes it easy to create all sorts of items with your images. Choose from greeting cards, calendars, custom frames, awards, invitations and a whole lot more. It's like having your own print shop.



If you need help, use PhotoStudio's context sensitive help menu.

You will also find a PDF file on your CD that you can print out.



## Advanced Features



The Tool palette (left) has all the tools you will need for any image editing task. Masking tools, text tools, all kinds of painting and fill tools and even a stamp and clone tool.

The Options palette (below) is an extension of the tools palette. When you click on a tool, that tool's options will be displayed.

Make sure you have enabled the option palette in your "view" settings.



### The Layer palette (docked)



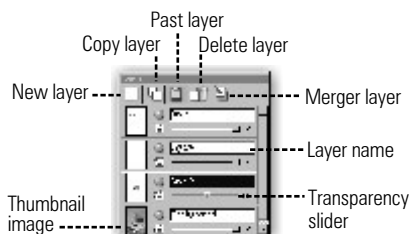
Photo Studio uses layers to keep different elements of your image separate while you edit.

For example, you may want to type some text, and then re-position it later.

With layers, your text would become a separate object on a different layer.

You may then move it, hide it, or give it a new color, all without affecting the original image.

### The Layer palette (un-docked)

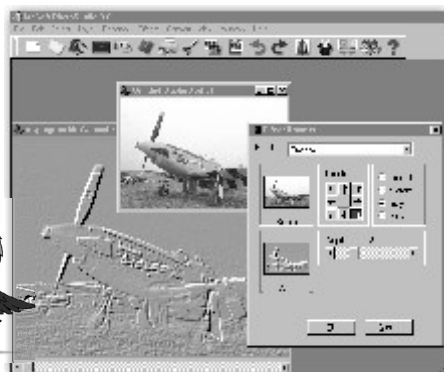


### The Effects Wizard

The Effects Wizard is the easiest way to create unique effects with your images.

Just select an image, click on the "Effects Wizard", and choose from hundreds of effects.

Every effect can be adjusted so your image comes out just the way you want.





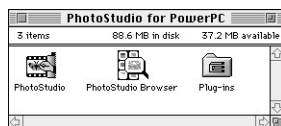
ArcSoft

# photo Studio™

PhotoStudio is an easy to use alternative to today's complex photo retouching applications for the Macintosh. Designed for novices as well as professionals, PhotoStudio provides all the tools you need to enhance digital images and produce professional quality artwork.



PhotoStudio includes a wide range of painting, drawing and retouching tools, as well as numerous editing functions like cloning, feathering and masking. For added convenience, PhotoStudio also includes a browser utility for cataloging and retrieving frequently used images.

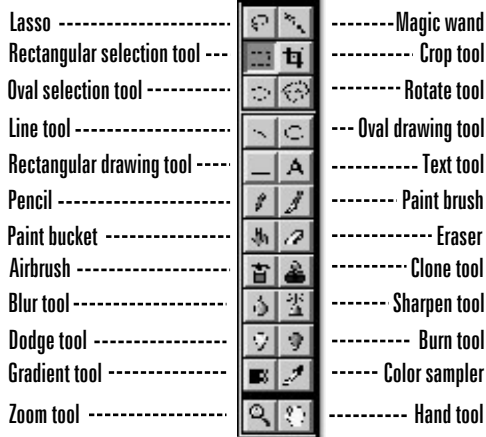


Double-click on the PhotoStudio Installer icon to install the program on your hard drive. Note that the installer may not work correctly if you are running virus protection software. If you encounter problems, please restart your computer with Extensions disabled (hold down the Shift key at startup). Then, double-click on the Installer and try again.

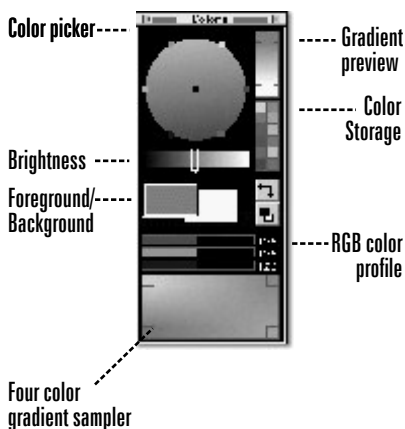
## Palettes

PhotoStudio offers features and tools usually only found in high-end, expensive software packages. Once you are familiar with the tools set in PhotoStudio, you will be able create digital masterpieces.

### Tool Palette

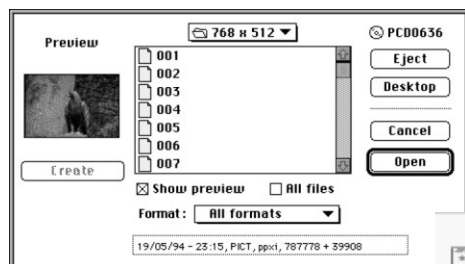


### Color Palette



## The PhotoStudio Browser

The PhotoStudio Browser allows you to catalog and view images as thumbnails (miniature representations) so you can easily categorize and retrieve them. Each time a catalog reaches its storage limit (150 images), the PhotoStudio Browser will automatically create a new catalog with the same name as the previous catalog, followed by a sequential number (i.e., Landscapes Landscapes 2 Landscapes 3, etc.).



## Cataloging Additional Images

Steps:

Double-click on the PhotoStudio Browser.

Select New Catalog from the File menu. Name the catalog and Save it in a desired location.

When you are asked to make a selection, navigate to the folder that has your images. A dialog box will appear to inform you that the PhotoStudio Browser is cataloging images, which may take a few minutes. If you need to stop this procedure, click on the Stop button.



If you want to add images to an existing catalog, select Add from the File menu, then select the desired image(s) or folders. To catalog image folders contained in the selected image folder, select the "Look for images in nested folders" option.

Important: If you make modifications to the original images, you must choose Update from the File menu in order for the PhotoStudio Browser to reflect those changes. A red checkmark will appear below each image to confirm that it has been updated.



Use the online Help for easy-to-find information on specific commands and features.

Welcome to PhotoPrinter, where printing digital images has never been easier! This fun-to-use printing utility lets you quickly print multiple copies of an image or several different images on a single sheet of paper. It's as simple as opening your image, selecting from an assortment of templates and clicking Print!



PhotoPrinter's main screen is where you can select your images, choose from a wide variety of templates, and drag-n-drop your photos in different positions until your layout is just the way you want it. There are built in features that let you edit your images, crop them to size and even build your own personal albums of your favorite images that you can categorize by subject. You will find PhotoPrinter is a fun program for home and a powerful business tool at work. PhotoPrinter also supports standard templates from Avery, Kodak and many others.



An Album is made up of thumbnails, which are small representations of image files.

## Navigation Diagram

The following diagram shows how each of PhotoPrinter's four interface screens relate to one another. As you can see, the Main Preview Screen acts as your "home base". From the Main Preview Screen, you have access to all of PhotoPrinter's functionality.

Album Manager Screen



Edit Screen



Crop Screen




Main Preview Screen - your "home base"

## Button Functions

**Control Buttons:** These four buttons are displayed throughout PhotoPrinter.

 **Tip** - lets you turn ToolTips off/on. (ToolTips identify the name of a button when your cursor pauses over it.) Click once to turn off, click again to turn on.


 **Help** - opens online Help. Click "Index" or "Search" to look up specific PhotoPrinter functions. This is a great resource for learning more about the program!


 **Minimize** - leaves PhotoPrinter running in the background so you can work in other programs.

 **Exit** - closes PhotoPrinter completely.


## Associated Screens


In order to move from the Main Preview Screen to other screens, you need to use the following buttons:

 **SAVE AS** - opens the standard Windows Save As dialog box so you can save your image with the changes you've made. Note: If you want to keep the original, remember to save the modified image under a different name.

 **OK** - returns you to the Main Preview Screen and places the selected image, with changes you've made, in the Page Preview Window. Note: OK will not permanently save the changes you've made to an image. To keep any changes, you must first use Save As.

 **Cancel** - returns you to the Main Preview Screen without applying or saving any of the changes made.

 **Album Manager Screen**- Clicking the Get Photos button on the Main Preview Screen takes you to the Album Manager Screen where you can select images for printing. Here you will find buttons that make it easy to create new photo albums, delete thumbnails from your albums and acquire photos from TWAIN-compliant cameras or scanners.

 **Crop Screen** - Clicking the Crop Photo button on the Main Preview Screen brings your selected image to the Crop Screen. Here you can trim your image, keeping just the portion you want to print.

 **Clicking the Edit Photo button** on the Main Preview Screen brings your selected image to the Edit Screen. Here you can enhance your image instantly.



Use the online Help for easy-to-find information on specific commands and features.

To access online Help, click the "?" Button at the top right corner of the screen.





ArcSoft

# photo Fantasy™

Welcome to PhotoFantasy, the imaging entertainment application that lets you turn your favorite photos into your wildest fantasies! This program gives you all the tools you'll need to send your boss on a white-water rafting adventure, place your face on the cover of a popular magazine, and even let your kids travel back to the time of dinosaurs.



You can choose your fantasy from over 100 included fantasy backgrounds. Then pick a photo of yourself or someone else. With just a few more clicks of a button, your chosen fantasy and photo will be combined together seamlessly. Finished photo fantasies make entertaining greeting cards, websites, calendars, posters, invitations, signs, buttons, banners and much more.

Add to your existing PhotoFantasy background collection! Check out the PhotoFantasy Website at: [www.arcsoft.com/pftemplates.htm](http://www.arcsoft.com/pftemplates.htm) for hilarious new PhotoFantasy background templates.

## Main Screen

The Main Screen acts as your "homebase" in PhotoFantasy. It contains controls that allow you to access the other program screens, as well as to make final adjustments and enhancements to your photo fantasy. From the Main Screen, you can also save, print and e-mail your finished photo fantasy.



Upon starting PhotoFantasy, you may notice that only the Get Fantasy Button is enabled in the Main Screen. This "start-up mode" is designed to help guide you through the steps of creating a photo fantasy, the first step being "Select Your Fantasy". Once this step is completed, the Get Photo Buttons will appear on the Main Screen, prompting you to complete the second step, "Select Your Photo". Once this second step is completed, the rest of the Main Screen options will become available.

## Get Fantasy Screen

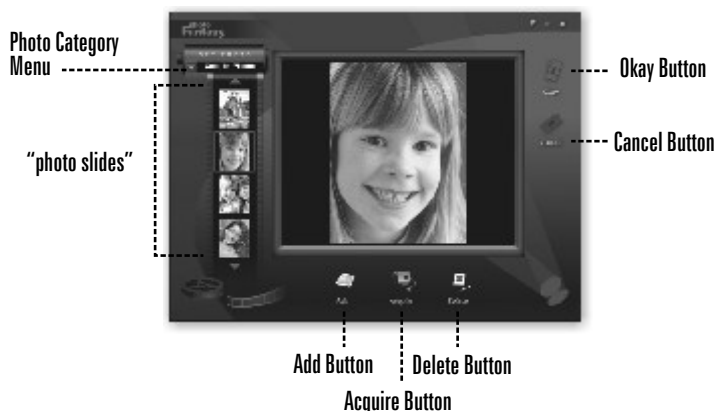
Clicking the Get Fantasy Button in the Main Screen takes you to the Get Fantasy Screen. Here you can select the fantasy background for your photo fantasy. Chose from over 100 that come with the program, or download more from the Web.





## Get Photo Screen

Clicking the Get Photo Button 1,2 or 3 in the Main Screen takes you to the Get Photo Screen. Here you can choose the photos for your photo fantasy and create new categories of photos.



## Print Screen



Once your fantasy is complete, you can send it by e-mail or print it out on your color printer. Now you can prove you have that Jet Fighter license once and for all.



You can learn more about PhotoFantasy by using online Help. Online Help provides easy-to-find information on specific commands and features, and is most helpful when printed out. To access online Help, click the "?" Button at the top right corner of the screen. You will also find a PDF file on the software CD that you can printout if you want a hard copy.

## Advanced Tools

- To flip the photo, click the Flip Tool.
- To move the photo in a specific direction, use the Move tools.
- To enlarge or reduce the size of the photo, use the Resize tools.
- To rotate the photo clockwise or counter-clockwise, use the Rotate tools.
- To control the precision of movements, use the Zoom In/Zoom Out tools.
- To add text to your photo, use the Text Tool.
- To automatically match the color of your photo with your fantasy, use the automatic Match Color Tool.
- To adjust the brightness in the entire photo fantasy, use the Brightness Tool.
- To adjust the contrast in the entire photo fantasy, use the Contrast Tool.
- To adjust the saturation in the entire photo fantasy, use the Saturation Tool.



# ArcSoft photo Montage™

Welcome to PhotoMontage, the unique imaging entertainment program that lets you turn your favorite digital photos into an eye-catching masterpiece of digital art.



Begin by choosing a main photo, such as a person's face. Then choose the "micro-image" collections with which to build your creation. In just minutes, you will see thousands of miniature images miraculously combine to form a mosaic-like "montage" of your main photo!

Using your color inkjet or laser printer, you can create high-quality mini-posters of your montage for friends and family. Or access ArcSoft's online web services to make full-size posters and other unique digital imaging gifts.

## Main Screen

The Main Screen acts as your "homebase" in PhotoMontage. It contains buttons that let you access the other screens, save your montages and make printouts. It also contains a Main Display Area so you can view "before", "after" and detailed versions of your finished montage.



Get Photo Button

Edit Button

Build Montage Button

Save As Button

Print Button

Cool Stuff Button

Photo Button  
Detail Button  
Montage Button

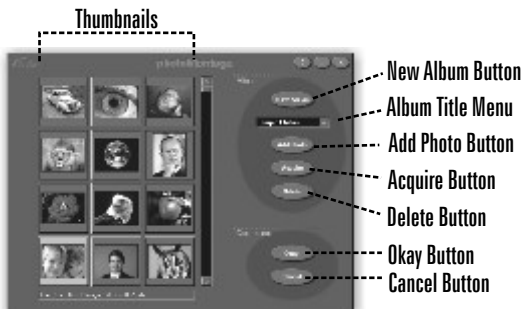
## Montage Terms

- **Main Photo** - The single image chosen as the subject of a montage.
- **Micro-images** - The small photos used to build a montage. In general, the more micro-images you use, the sharper the detail in your finished image.
- **Collection** - A group of micro-images. A collection can be created from your own digital images or pre-made by ArcSoft on a CD. Your Ricoh CD contains a starter collection called the "Mega Collection"
- **Montage** - The final image made up of many micro-images. "PhotoMontage" refers to the program.



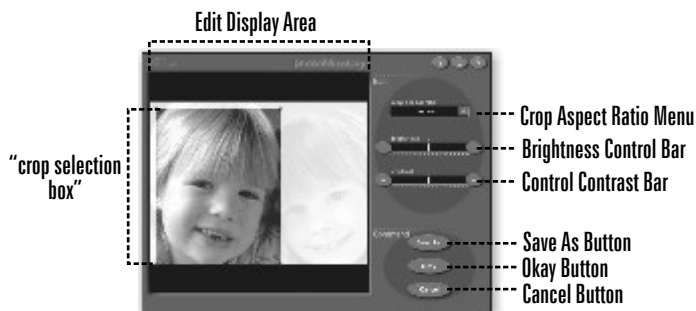
## Get Photo Screen

Clicking the Get Photo button in the Main Screen takes you to the Get Photo Screen. Here you can choose the main photo for your montage. You may also create a new album and add and remove thumbnails from the album.



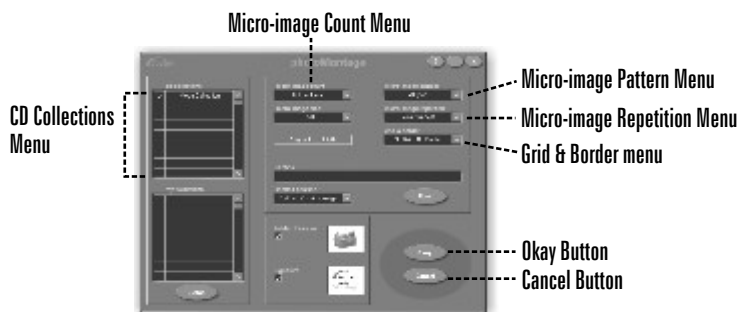
## Edit Screen

Clicking the Edit Photo Button in the Main Screen takes you to the Edit Screen. This screen gives you easy-to-use tools for cropping and enhancing your main photo.



## Build Screen

Clicking on the Build Montage Button in the Main Screen takes you to the Build Screen. This screen contains several options for preparing your micro-images for rendering. It also contains a Setup Button to take you to the Collection Setup Screen.



Be sure to check out the special PhotoMontage web page, which offers unique program add-ons such as a poster printing service, a library of micro-image collections and other cool imaging gifts. Simply click on the "Cool Stuff" Button on the Main Screen to open the "Special PhotoMontage Services" screen. Then select the online option. Your browser will automatically launch and link you directly to the PhotoMontage web page.



You can learn more about PhotoMontage by using online Help. Online Help provides easy-to-find information on specific commands and features, and is most helpful when printed out. To access online Help, click the "?" Button at the top right corner of the screen. You will also find a PDF file on the software CD that you can printout if you want a hard copy.



Now there is a place on the Internet where you can keep all your images in custom albums and share them with anyone you want. Whether for business or pleasure, you will find PhotolIsland the best place to share your images.



Take advantage of PhotolIsland's free offer for Ricoh customers only and instantly begin sharing your photos today.

Join PhotolIsland.com ([www.photolIsland.com](http://www.photolIsland.com)) today and become a member of the best photo-archiving site on the Internet. Post your digital photos on a secure server and share your favorite memories via PhotolIsland with long distant family members and friends. Get free email, send postcards, create custom photo albums and a whole lot more. Every new member receives 10MB free secured web space, with an unlimited number of photo albums to choose from.

Receive your free PhotolIsland gift by launching PhotolIsland.com from within the Arcsoft Camera Suite Start Menu, or from the PhotolIsland desktop icon. Go to the special promotions area on PhotolIsland for the Ricoh promotional code number.



When you become a member of PhotolIsland, you have full access to a large variety of free interactive features and services that no other photo-sharing site can offer. Take a tour and see for yourself.

## Share and Archive Your Favorite Photos

As a member of PhotolIsland securely post, share and store all your photos on-line. Upload images and display them in a secured album for all your friends and family to view. Customize your albums by including a welcome page or customize backgrounds for each of your albums.



# photoisland.com

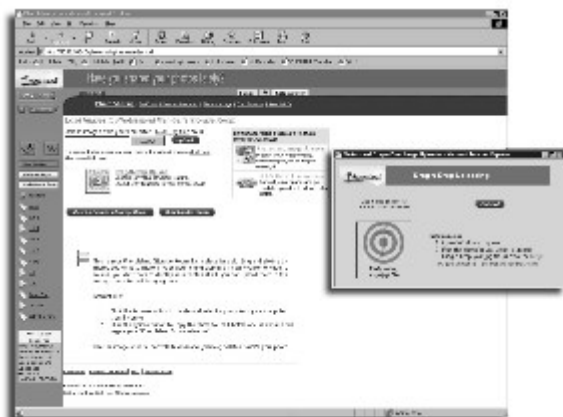


## Create Custom Photo Albums

Choose from a wide variety of customized digital photo albums including baby, wedding, honeymoon, vacation, birthday and more. Follow simple steps for uploading photos to each page of the album while adding detailed descriptions to each photo as guided.

## Easily Upload all Your Images to PhotoIsland

Unlike other web sites that require members to upload files one by one, PhotoIsland lets you drag and drop multiple photos straight from Windows Explorer to your PhotoIsland Storage Room using PhotoIsland's Drag and Drop Uploading software program. Use the PhotoIsland JPG Batch File Converter that comes bundled with the Ricoh camera, and instantly convert multiple images into the web-ready JPG file format.





## Instantly Send Personalized Photo Postcards

Send personalized postcards using your own pictures or choose from one of the many postcards provided by PhotoIsland. Send birthday, anniversary, holidays and more. Add music or customized stamps for an added touch.

## Get Free Software Downloads

Download new and exciting free software. PhotoIsland will regularly offer different software programs for free downloading and will be added on a monthly basis.



## Create PhotoMontage Posters

Order a customized PhotoMontage poster rendered from thousands of micro-images from PhotoIsland. Upload your favorite image to the site and have it recreated using a variety of images including T2 images, "themed" images and more.

# photoisland.com

## Purchase Personalized Gifts

Purchase unique photo-related gifts like personalized t-shirts, mugs, hats and much more. PhotoIsland also offers hot digital imaging software and hardware related products that can be purchased from its on-line store.



## Receive Imaging News and Tips

Check out PhotoIsland for regular digital imaging tips and hints including editorial content from experts, and the latest in digital imaging news.



## Receive Free Email

Send teaser photos directly from your PhotoIsland album. Simply select a photo and send it with a personalized message and password to friends and family-- inviting them to view your new photos.

## Create Customized Guest Books

Invite guests to view your photo albums and sign your guest book. Visitors can leave messages, notes and comments or leave messages for other visitors.

## Easily Enhance Your Images

Once your images are uploaded you can edit them by using the provided photo editing tools like enhancing, rotating and improving the color of your photos.

## Create Cool Photo Slide Shows

With just one click, you can easily display your photos one after another in a story-like fashion. Each photo can be accompanied by captions or descriptive text.

## Easily Search for Lost Photos

Associate up to six descriptive keywords to each photo for easy searching and sorting. Search your private photo storage room for photos based on filenames, key words and captions.

see you @

 **PhotoIsland.com**  
Have you shared your photos lately?



# RICOH

## Camera Utility

Ricoh Camera utility is a simple program that utilizes your camera's serial interface to transfer files to and from the RDC-5300. Although it has limited functionality as compared to PhotoBase, it occupies a very small amount of hard disk space. This makes the program ideal for laptops or when hard disk space is limited and USB transfer is not supported.



Ricoh Camera Utility is not installed through the standard software CD option dialog box. It must be manually installed by navigating to the "camera utility" folder on the CD. Run the "setup" file to install.

After the utility is installed, connect the RDC-5300 to your computer using the supplied Serial transfer cable as described on page 7. When the program is run, a dialog box will appear so you can set the transfer speed and com port your camera is connected to.

### Downloading images to your computer



Click on the "copy from camera" icon from the main screen to start the download process. A dialog box will appear. Select the memory source of your images by checking the appropriate box. (Memory = onboard memory, IC = removable card).



Now you may cycle through your images using the arrow keys and select the ones you want to download. The active image will be displayed on your camera's monitor. Press "copy" to begin.

Select a folder you wish to store your images in and click "select" to transfer your images.



Use the "memo" option to attach a unique description to your image.



A status bar will show you the progress of your download.

### Uploading images to your camera



Click on the "copy to camera" icon from the main screen to start the upload process. A dialog box will appear. Select the folder that contains the files you wish to upload.



Select the files you wish to upload. Ensure you have ample memory in your camera to accept the files. Click "open". A status bar will show you the progress of your upload.



Uploading images to your camera is a great way to play back custom presentations from your camera when you connect it to a TV using the supplied video cable.

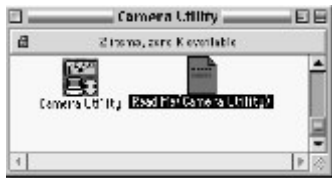




# RICOH

## Camera Utility

Ricoh Camera Utility is a simple program that utilizes your camera's serial interface to transfer files to and from the RDC-5300. This is a great utility if your computer does not support USB or you want to attach memos to your images.



From the RDC-5300 Software CD in the Camera Utility folder, you may either drag the Ricoh Camera Utility program icon to your desktop, or simply run the program from the CD. Be sure to check the "Read Me" file for important updates.



Connect the RDC-5300 to your computer using the supplied Serial transfer cable as described on page 9. When the program is run, a dialog box will appear so you can set the transfer speed and port your camera is connected to.

### Downloading images to your computer



Click on the "copy from camera" icon from the main screen to start the download process. A dialog box will appear. Select the memory source of your images by checking the appropriate box. (Memory = onboard memory, IC = removable card).



Now you may cycle through your images using the arrow keys and select the ones you want to download. Your camera's monitor will display the active image. Press "copy" to begin.



Use the "memo" option to attach a unique description to your image.

Select a folder you wish to store your images in and click "select" to transfer your images. A status bar will show you the progress of your download.



### Uploading images to your camera



Click on the "copy to camera" icon from the main screen to start the upload process. A dialog box will appear. Select the folder that contains the files you wish to upload.



A status bar will show you the progress of your upload.



Uploading images to your camera is a great way to play back custom presentations from your camera when you connect it to a TV using the supplied video cable.

## NOTES

[illegible]



From the desk of **SCOTT COLLINS**

Things to do today...

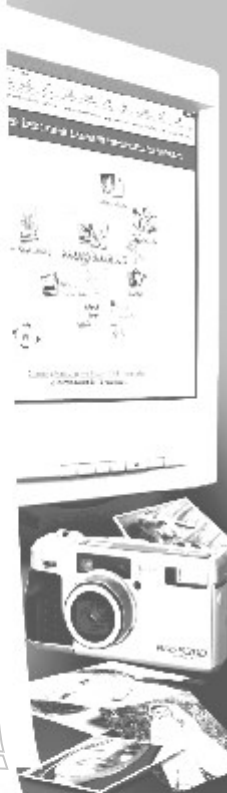
- ☒ Buy cool new Ricoh digital camera
- ☒ Impress friends with cool new toy (brag to boss)
- ☒ Get free membership to PhotoSharing web site, *PhotoIsland.com*
- ☒ Take pictures of dog for wife — upload to *PhotoIsland*
- ☒ Take pictures at Bob's bachelor party
- ☒ Upload best photos to *PhotoIsland*
- ☐ Email guest password log-in for all to see
- ☐ Create wedding on-line photo album for bride and groom
- ☐ Make album of kids for in-laws to view on *PhotoIsland*
- ☒ Download free software from *PhotoIsland*
- ☐

[www.photoisland.com](http://www.photoisland.com)

FJON

see you @

 **PhotoIsland.com**  
Have you shared your photos lately?



L210-2549

**RICOH**<sup>®</sup>  
Image Communication

Five Dedrick Place  
West Caldwell, NJ 07006  
1-888-742-6410