

RICOH®

RDC-6000

IMAGE CAPTURE DEVICE

Software Manual



Software installation requirements at a glance

Use this chart to determine what combinations of software, drivers and camera configurations you will require to preform specific tasks.

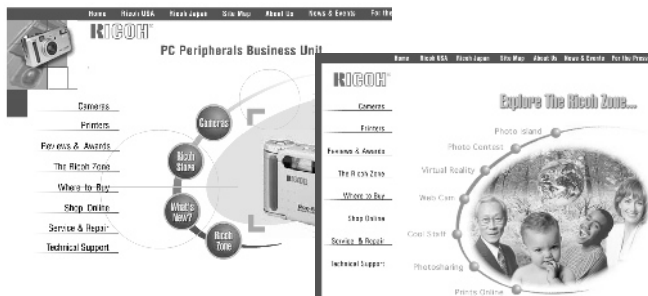
If you want to:	You need to install:	And these drivers:	And use this connection:
Download images and movies you captured with your camera.	Ricoh Camera Utility	USB drivers for USB transfer. No drivers are required for Serial	USB or Serial Mode dial turned to "↔".
View and edit images you downloaded into your computer.	PhotoImpressions, or any program that reads JPEG.	No special drivers required	Not applicable
View movies you downloaded into your computer.	VideoImpressions, You may also use Quicktime or MediaPlayer for playback only.	Windows: The drivers are installed with Ricoh Camera Utility. Macintosh: No drivers required.	Not applicable
Capture live streaming video directly from your camera.	VideoImpressions.	USB drivers and Video drivers	USB Mode dial turned to "📹".
Use your camera as a video-conferencing Web camera.	Windows: Microsoft Netmeeting Macintosh: CU-SEE-ME	USB drivers and Video drivers	USB Mode dial turned to "📹".
Allow others to view the movie files captured by your camera.	Other party must have: Windows - MediaPlayer. Macintosh: Quicktime.	Other party must install: Windows - Ricoh MJPEG decoder. Macintosh: No install required.	Not applicable

Visit the Ricoh Web site

The Ricoh website is a great resource for all your digital requirements.

You'll find everything from technical support answers to product updates, to accessories for your camera.

Visit www.ricohzone.com today.



Software Licensing Agreement

The following is a legal software license agreement between you, the software end user, and the companies of Ricoh corp. and ArcSoft, Inc. Carefully read this license agreement before using the product. Using the product indicates that you have read this license agreement and agree to its terms. If you do not agree to the terms, promptly return the package to the place where you purchased it within 10 days of the date you acquired it for a full refund. Grant of License. This license permits you to use one copy of the software included in this package on any single computer. For each software licensee, the program can be in use on only one computer at any given time. The software is in use when it is either loaded into RAM or installed into the hard disk or other permanent memory. A multi-site license permit from ArcSoft and Ricoh is required if the program is going to be installed on a network server for the sole purpose of distribution by other computers, or if the program is going to be installed on and used by more than one computer. Copyright. The software contained in this package is owned by ArcSoft and Ricoh and is protected by United States copyright laws, international treaty provisions, and all other applicable national laws. The software must be treated like all other copyrighted materials (e.g. Books and musical recordings). This license does not allow the software to be rented or leased, and the written materials accompanying the software (if any) may not be copied. Limited Warranty. ArcSoft, Inc. And Ricoh, warrants that the software contained herein will perform substantially in accordance with the accompanying documentation. No Other Warranties. ArcSoft and Ricoh disclaims all other warranties, either express or implied, including but not limited to implied warranties of merchantability and fitness for a particular purpose, with respect to the Software, the accompanying written materials, and any accompanying hardware (if any). No Liability for Consequential Damages. In no event shall ArcSoft, Ricoh or its suppliers be liable for any damages whatsoever (including but not limited to damages for loss of business profits, business interruption, loss of business information, or any other pecuniary loss) which results from an inability to use this software, even if ArcSoft, Inc. and Ricoh have been advised of the possibility of such damages. Because some states/jurisdictions do not allow the exclusion or limitation of consequential or incidental damages, the above limitations may not apply to you. U.S. Government Restricted Rights. The Software and Documentation are provided with Restricted Rights. Use, duplication, or disclosure by the U.S. Government is subject to restrictions as set forth in subparagraph (c)(1)(ii) of the Rights in Technical Data and Computer Software clause at DFARS 252.227-7013 or subparagraphs (c)(1)(2), and (3) of the Commercial Computer Software - Restricted Rights at 48 CFR 52.227-19, as applicable, and any amendments thereto. The manufacturer is ArcSoft, Inc., 46601 Fremont Blvd., Fremont, CA 94538. If this product was purchased in the United States, this Agreement is governed by the laws of the state of California; Otherwise, local laws may apply.



RDC-6000 Software Manual



Congratulations on your purchase of the Ricoh RDC-6000 digital camera. This camera, in conjunction with its included software, will let you do more with your camera than you ever imagined.

Table of Contents:

Technical Support	3
System Requirements	3
CD contents Windows.....	4
CD contents Macintosh.....	5
USB driver installation for Windows.....	6
USB driver installation for Macintosh.....	7
Connecting your camera for file transfer.....	8
Ricoh Camera Utility for Windows.....	8
Ricoh Camera Utility for Macintosh.....	9
PhotoImpressions for Windows and Macintosh.....	10
VideoImpressions for Windows	12
VideoImpressions for Macintosh	14
PhotoFantasy for Windows and Macintosh	16
PhotoMontage for Windows and Macintosh	18
PhotoIsland for Windows and Macintosh	20



Hi! My name's Vince Pixel and I will be giving you a guided tour through this software manual. I will give you helpful hints, and show you some advanced features that will help you make the most of your RDC-6000.

Note:

Some of the software programs on the CD differ depending on whether they are for Windows or Macintosh computers. Use the symbols below to determine what software is compatible with your computer.



This symbol represents Microsoft Windows computers



This symbol represents Macintosh Computers

Tech support

Free tech support is available for 45 days from your first call to the numbers below. When you call, please be at your computer and ready to repeat the problem you are having. We will require your camera's serial number located on the bottom of your camera.

ArcSoft software and installation issues

Phone: 510-440-9901 M-F 8:30AM - 5:30PM (PST)

Fax: 510-440-1270

Email: support@arcsoft.com

Camera operation and file transfer issues

Phone: 800-459-3968 M-F 6:00 AM - 9:00 PM CST or 9:00 AM to 6:00 PM Sat - Sun.

FaxBack System: 800-442-8796

Online FAQ's and drivers: www.ricohzone.com

Email: techsupport@ricohzone.com

Minimum System Requirements

Some software may work on operating system versions other than listed below. The listed minimums are required for full compatibility with the RDC-6000 camera. For updated information on system compatibility, visit our web site at www.ricohcpg.com.



- Pentium based PC
- Windows 98, 2000 or NT 4.0
- 16 MB RAM (32 MB RAM recommended)
- 100 MB free hard disk space
- CD-ROM drive
- Mouse

USB Requirements

Windows 98 or 2000 is required for USB file transfer. The driver may not work with the USB ports connected via expansion devices such as PCI bus. Ensure your USB port is operating properly prior to use.



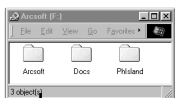
- System 8.5 or better
- 32 MB RAM (64 MB RAM recommended)
- 100 MB free hard disk space
- CD-ROM drive
- Mouse

USB Requirements

Apple iMac, PowerMacintoshG3 (pre-installed with operating factory USB port.)



Review the “readme” files associated with each program for more information.



A document folder that contains the software help files in PDF format and a PDF reader
A Photolsland folder that contains utilities to make using Photolsland easier.

jebup.exe

Photolands software lets you make free personal photo albums on the Web.



Setup.exe

Select the folder that matches your version of Windows. Double-click the “set-up” icon to install. Refer to page 8 for downloading instructions.



This program installs a video codec that allows computers without Ricoh Camera Utility installed to playback the RDC-6000's AVI files using Microsoft MediaPlayer. If you have installed Ricoh Camera Utility, these drivers are already installed.



This link will take you directly to the Ricoh Web site for software updates, tech support, and new information regarding your camera and accessories. www.ricohzone.com

TWAIN is an alternate method to download images from your camera. TWAIN should only be used by advanced users as the interface does not allow you to specify a location for the images to be stored. It is recommended that you use the Ricoh Camera Utility to download images instead.



Double-click on the "Set-up" icon to install the program. Follow the on screen instructions.

This folder has the USB drivers required for Windows to recognize the RDC-6000 when it is plugged into a USB port. You must have a functional USB port to use this driver.

Installation:

Refer to page 6 for installation instructions.

This folder contains the drivers required to capture live video from the RDC-6000 when connected to a USB port. Software that has video capture capabilities is required to use the camera as a video capture device. The USB drivers must also be installed in order for the camera to be recognized by the computer.

Installation:

Double-click on the "Set-up" icon to install the program. Follow the on screen instructions.

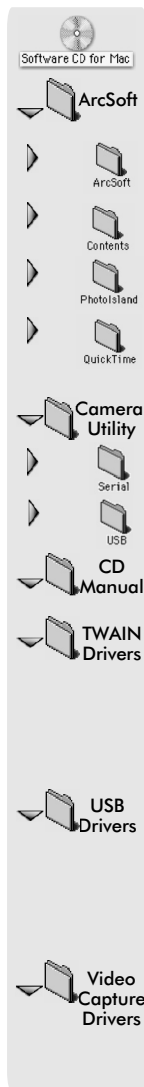


On The Disk

The software contained on your CD is specially designed to operate with your RDC-6000 digital camera. Please read the following information prior to installing your software to familiarize yourself with the contents of the CD.

Software CD Contents and Installation - Macintosh:

The ArcSoft folder contains the files necessary to install the ArcSoft Software Suite listed below onto your hard drive. You will also find a folder that contains Quicktime if you do not have Quicktime installed.



PhotoImpressions is an easy to use photo editor.

VideoImpressions lets you make movies from video files and stills.

PhotoMontage lets you create a "mosaic" of a single image from a library of images.

PhotoFantasy allows you to place personal images into background templates.

PhotoIsland software lets you make free personal photo albums on the Web.

Installation:

From within the ArcSoft folder, open the sub-folder called ArcSoft. Select your language if multiple languages are shown. Double-click on a titles icon to install.

This folder contains Ricoh Camera Utility. This is the program you will use to transfer images and video from your camera to your computer.

Installation:

Determine the method you will use to transfer files, serial or USB, and open the corresponding folder. Drag the program's icon onto your desktop to install the program. Refer to page 9 for downloading instructions.



The PDF version of this manual. Use Adobe Acrobat to view the manual.

TWAIN is an alternate method to download images from your camera. TWAIN should only be used by advanced users as the interface does not allow you to specify a location for the images to be stored. It is recommended that you use the Ricoh Camera Utility to download images instead.

Installation:

Select either the USB or Serial folder depending on your transfer preference. Drag the driver in to your system extensions folder.

This folder has the USB drivers required for your Macintosh to recognize the RDC-6000 when it is plugged into a USB port. You must have a functional USB port to use this driver.

Installation:

Drag the USB driver into the "system" folder. Refer to page 7 for detailed installation instructions.

This folder contains the drivers required to capture live video from the RDC-6000 when connected to a USB port. Software that has video capture capabilities is required to use the camera as a video capture device. The USB drivers must also be installed in order for the camera to be recognized by the computer.

Installation:







Drag the driver icon into the "System folder". Allow the driver to be copied. See page 14 for detailed instructions.



USB Driver Installation

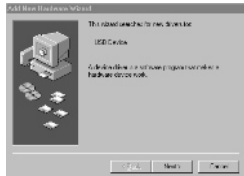
Prior to downloading your images and movies via USB, you need to install the USB drivers. Installing the drivers is a two step process. First you will connect the camera to your computer, then you will install the driver from the Ricoh CD-ROM. Make sure the Windows version of the CD is in your CD drive and power is supplied to the camera before continuing. After the USB drivers are installed, you will need to install the Ricoh Camera Utility, as described on page 8, to actually download your images and movies.

Camera Set-up

-  Ensure the camera's power is OFF by sliding the power lever and releasing.
-  Connect the supplied Ricoh USB cable to your camera as shown.
-  Connect the other end of the cable to your PC.
-  Turn your camera's power on. "PC mode" will show on the monitor.
-  Turn the mode dial to "PC".
-  "PC mode" will show on the monitor.

Camera connection complete. Proceed to the computer set-up instructions below...

Driver installation



If the camera is properly connected to a functional USB port for the first time, the Windows Add New Hardware wizard will appear. Follow these steps to install the drivers. Make sure you have placed the Windows version of your Ricoh CD in your CD-ROM drive.

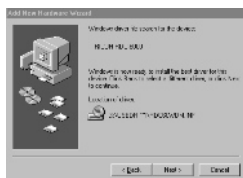
Select "Next" from the first screen.



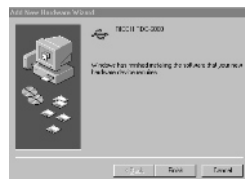
Select "display a list..." from the options screen and click "next".



Select "specify a location" and enter "G:\USB Drivers". ("G" represents the drive that contains the Ricoh CD-ROM).



The Wizard will detect the USB drivers to be installed. Click "next". Finally, click "finish" on the last screen and the drivers will install.



You only need to do this installation the first time you use your camera. Once the drivers are installed, you never need to do this again.

You may now download your camera's images and movies via USB using the Ricoh Camera Utility software. See page 8 for instructions on how to do this.

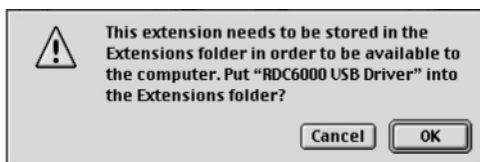
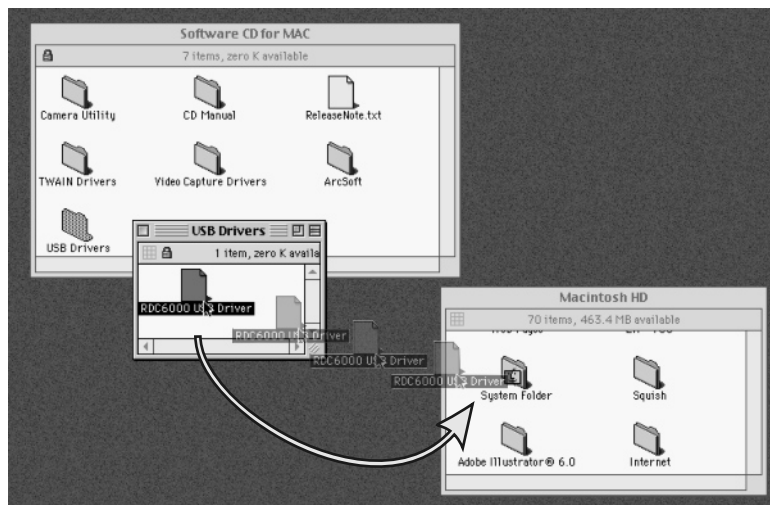


USB Driver Installation

Prior to downloading your images and movies via USB, you need to install the USB drivers. Installing the drivers is a two step process. First you will place the USB extensions in the proper folders, then you will re-boot your computer.

Driver installation

Place the RDC-6000 Software CD-ROM in your CD-ROM drive. Open two Finder windows. One showing the contents of the USB Driver folder on the CD and the other showing the System folder on your hard drive. Drag the USB driver into the System folder. Do not hold the driver icon over the System folder icon for too long or the System folder will open and complicate the install.



When the caution dialog box appears, click "OK" to allow the driver into the system folder. Finally, reboot your system for the driver to become active.

You may now download your camera's images and movies via USB using the Ricoh Camera Utility software. See page 9 for instructions on how to do this.

Downloading images from your camera.

Downloading images is a two step process, first you must connect your camera to the computer, then launch the Ricoh Camera Utility software installed on your PC. USB file transfer requires prior installation of the camera's USB drivers.

Camera Set-up



1
Ensure the camera's power is off by sliding the power lever and releasing.

Use the AC adapter whenever possible. Loss of power when downloading could corrupt your image files.



2
If you have a USB port on your computer, connect the USB cable to your camera.

OR

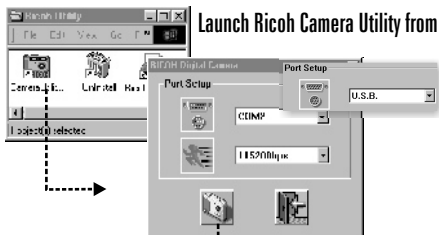


If you do not have a USB port, use the Serial cable instead.



Ricoh Camera Utility

Use this utility to bring images and movies from your camera into your computer. You will be able to select which files you want to transfer, get information about those files and create folders for the files to be transferred into. If you connected the camera via USB, you must first install the USB drivers as describe on page 6.



Launch Ricoh Camera Utility from the Windows Start button or from the program group as shown.

From the menu, select the type of contention port you are using, USB or Serial.

If using a Serial connection, specify the Com port the camera is connected to. If you selected the proper Com port and still experience transfer problems, reduce the transfer speed.

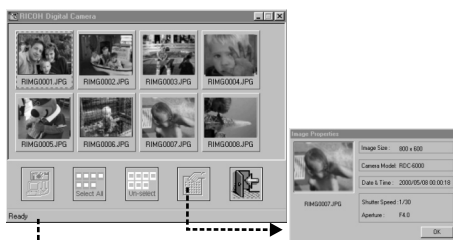
Next, click on the camera icon to view the images on your camera.

Select the individual files you wish to transfer using your mouse or the "Select All" button.

Clicking the "download" icon will initiate file transfer.

A browser window will appear that allows you to select, or create, a folder for your images. Click "OK" when finished.

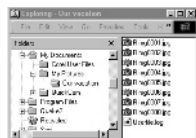
A good place to keep your images is in the "My Pictures" folder located in your "My Documents" folder.



The property button shows you information about each image.



A progress bar will show the status of your transfer.



Once transfer is complete, your images will be in the folder you selected.

3



Connect the other end of the cable to your PC.

OR



Macintosh Serial users, connect the Mac adapter to the cable to make it compatible with your Mac.

4



Turn the mode dial to "P".

5



Turn your camera's power on.

6



"PC MODE" will appear on the monitor.

Proceed to the software instructions below...



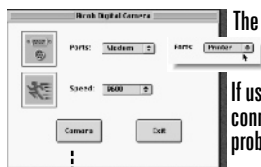
Ricoh Camera Utility

Use this utility to bring images and movies from your camera into your computer. You will be able to select which files you want to transfer, get information about those files and create folders for the files to be transferred into.



RDC6000
Camera Utility

Click on the Camera Utility icon to launch the program.



The USB version of the software does not require the selection of a port.

If using a Serial connection, you will need to specify the port the camera is connected to. If you selected the proper Com port and still experience transfer problems, reduce the transfer speed.

Next, click on the camera button to view the images on your

Select the individual files you wish to transfer using the mouse or the "Select All" button.

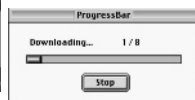
Clicking the "download" icon will initiate file transfer.



A browser window will appear that allows you to select, or create, a folder for your images.



The property button shows you information about each image.



A progress bar will show the status of your transfer.



PhotoImpressions' Main Screen



The main screen in PhotoImpressions gives you easy access to all of the program's powerful features. From here, you can create photo albums of all the images on your computer as well as edit, print and e-mail your pictures in a variety of ways.

You can edit two images at the same time in PhotoImpressions. Just double-click on the images you want to edit from your album and they will both appear in the edit screen.



Getting your images into PhotoImpressions

To bring images taken with your camera into PhotoImpressions, you first need to use Ricoh Camera Utility to download the images into a folder. Then you can access the folder from PhotoImpression's as explained below.

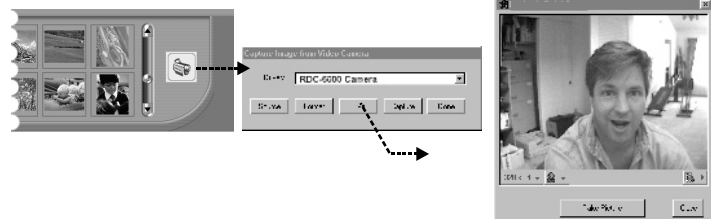


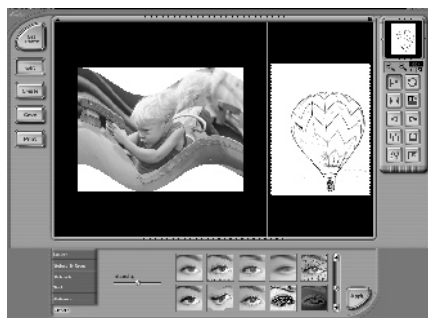
If you do not wish to use the album feature, you may alternately use the "From File" option to open images for instant editing.

Capturing "Live" still images from your camera.

You may capture live still shots directly from your camera as long as the camera is connected via USB and the camera's video drivers have been installed. Rotate the camera's Mode Dial to the position to enable the live video feature.

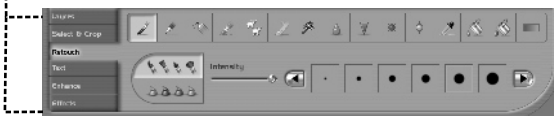
Click on the "camera" icon at the far right of the album window. Select the RDC-6000 as the source driver. A live image from your camera should appear. Use the software's capture controls to take a picture.



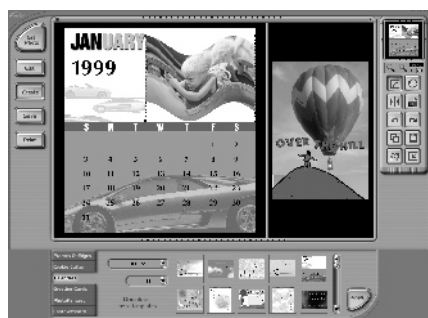


Click on the "edit" icon from the menu bar and Photolmpressions turns into a powerful photo editor. You may select from a large variety of effects and tools to enhance or change your images in almost anyway possible.

Each button in the "edit pallet" brings up a new set of tools depending on what you want to do. Special effects, adding text, resizing and even layers to keep multiple elements in a single image separate.



Creating fun projects and using templates



Click on the "Create" button to invoke Photolmpressions wide selection of templates. From here you can easily create anything from calendars to custom frames for your images with just a few clicks of your mouse.



Powerful printing options



A great way to keep track of all your images is to print out thumbnail sheets of each of your albums.

You can even select to print out multiple images from a variety of albums, and using Photolmpressions templates, print out the images in multiple sizes on a single sheet.

Use Photolmpressions powerful context sensitive help to learn more.





ArcSoft

video Impressions

Videol Impressions is an easy-to-use video and image editing software program that lets anyone be a desktop producer. Edit, and create desktop video presentations from images and videos taken with your camera or that you already have. You can also capture live video directly from your camera.

The Album Screen



Videol Impressions supports BMP, TIF, JPG, PCD (read only), PCX, TGA, AVI, MPG and FlashPix file formats.

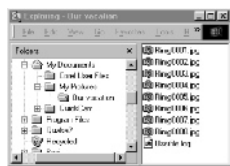
You may save video and images in a variety of formats including AVI, MPG, VIF (Videol Impressions Format).



Click on the "New Project Button" to begin creating a video.

The Album Screen will appear. It includes thumbnail albums of video and image files and a "Storyboard" along the bottom.

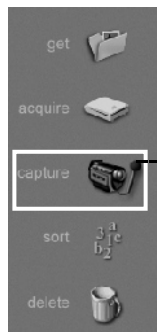
Using the available tools, you can add files to your albums, and move files from your albums to the storyboard using drag-n-drop to create movies.



Use the "Add" button to add your own images to an album

You can create a new album to add images into, or just use the existing albums.

Capturing live video from your RDC-6000



You may capture live still shots directly from your camera as long as the camera is connected via USB and the camera's video drivers have been installed.

Rotate the camera's Mode Dial to the "video" position to enable the live video feature.



Use the capture controls to record and playback your video.

Select the RDC-6000 from the driver list.

Videol Impressions comes with a tutor program to make you an expert fast! Just load files from the files Videol Impressions directory called 'tutor'. Then follow the tutor instructions in the programs help files.



The Storyboard

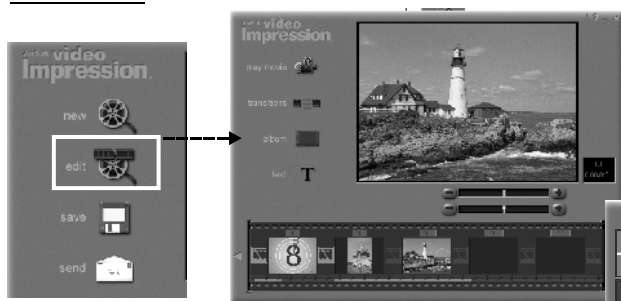


The Storyboard shows the order your video and image files will appear in your project. You can rearrange items on the Storyboard by dragging or using the right-click functions to Cut/Copy/Paste/Delete.

Drag files from the album Thumbnails to the Storyboard to add them to your project. Dragging to a particular frame on the Storyboard will add the file at that point. Alternately, you can select a thumbnail, then click on the "Add To Storyboard Button" to add it in the last frame of the Storyboard. Right-click on an item on the storyboard to select from various functions and file information.

WAV audio files can be dragged and dropped on either Soundtrack 1 or Soundtrack 2. Audio can be rearranged and moved between tracks by dragging the file to the desired location.

The Edit Screen



The Edit Screen automatically displays the proper controls for working with either still image files, video files, audio files, or text.

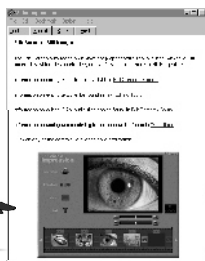
Click the Transition button to open the Transition Screen. The menu at the top of the screen allows you to select from different types of transitions. Drag the thumbnail for a transition effect to the position before or after the desired image in the Storyboard.

Once you've set up your transitions, click on the Play or Edit button to exit the Transition Screen.



Putting it all together

Selecting the Play Movie option will render your movie and allow you to play it back.



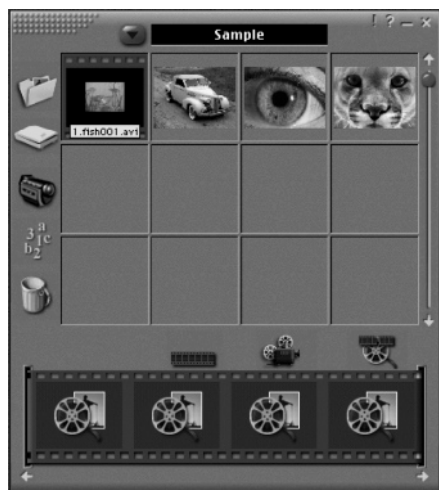
Remember to use the Quick Start Tutorial for a step by step lesson on how to make perfect movies. The Online Help offers clear and context-sensitive explanations on the use of each tool and feature in the interface.



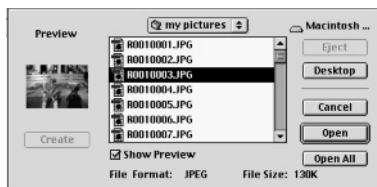
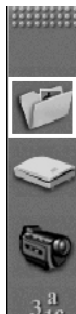
ArcSoft **video Impressions**

Videolmpression is an easy-to-use video and image editing software program that lets anyone be a desktop producer. Edit, and create desktop video presentation from images and videos taken with your camera or that you already have. You can also capture live video directly from your camera.

The Album Screen



The Album Screen includes thumbnail views of video and image files. A Storyboard is along the bottom edge. Using the available tools, you can add files to your albums, and move files from your albums to the Storyboard.



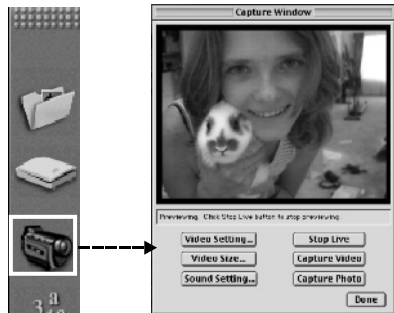
Use the "Get" button to add your own images to an album.

You can create a new album to add images into, or just use the existing albums.

Capturing live video from your RDC-6000

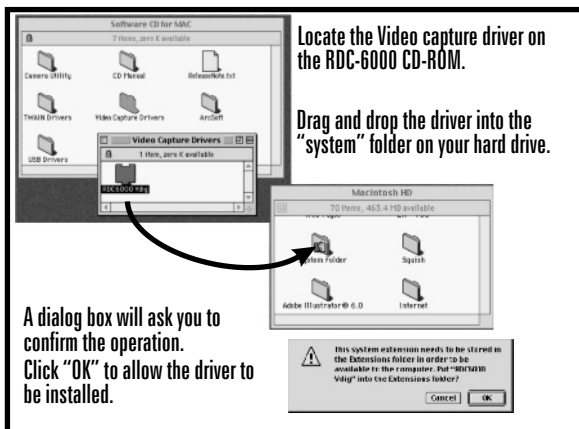
You may capture live still shots directly from your camera as long as the camera is connected via USB and the camera's video drivers have been installed.

Rotate the camera's Mode Dial to the "📷" position to enable the live video feature.



Use the capture controls to record and playback your video.

Installing the video drivers



Locate the Video capture driver on the RDC-6000 CD-ROM.

Drag and drop the driver into the "system" folder on your hard drive.

A dialog box will ask you to confirm the operation. Click "OK" to allow the driver to be installed.

Edit Screen - Videos

The Edit Screen automatically displays the proper controls for working with either still image files, or video files based on which is currently selected in the Storyboard.

This screen is for editing video files. Information on editing still image files is available in Edit Screen below.

The video editor lets you change the brightness and contrast of the video sequence as well as add text overlays that will appear in your final movie.



Edit Screen - Still Images

The Edit Screen automatically displays the proper controls for working with either still image files, or video files.

This section refers to still image files. Information on editing video files is available in Edit Screen above.

In the editing window, you may specify the period of time that an image appears on screen when your movie is played.



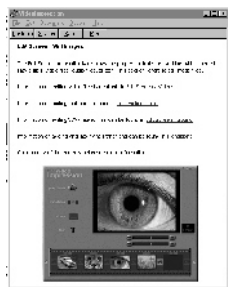
Putting it all together

Selecting the "Play Movie" option will render your movie and allow you to play it back.



Remember to use the Quick Start Tutorial for a step by step lesson on how to make perfect movies.

The Online Help offers clear and context-sensitive explanations on the use of each tool and feature in the interface.





ArcSoft

photo Fantasy™

Welcome to PhotoFantasy, the imaging entertainment application that lets you turn your favorite photos into your wildest fantasies! This program gives you all the tools you'll need to send your boss on a white-water rafting adventure, place your face on the cover of a popular magazine, and even let your kids travel back to the time of dinosaurs.



You can choose your fantasy from over 100 included fantasy backgrounds. Then pick a photo of yourself or someone else. With just a few more clicks of a button, your chosen fantasy and photo will be combined together seamlessly. Finished photo fantasies make entertaining greeting cards, websites, calendars, posters, invitations, signs, buttons, banners and much more.

Add to your existing PhotoFantasy background collection! Check out the PhotoFantasy Website at: www.arcsoft.com/pftemplates.htm for hilarious new PhotoFantasy background templates.

Main Screen

The Main Screen acts as your "homebase" in PhotoFantasy. It contains controls that allow you to access the other program screens, as well as to make final adjustments and enhancements to your photo fantasy. From the Main Screen, you can also save, print and e-mail your finished photo fantasy.

Get Fantasy
Button

Get Photo
Buttons

Save As Button

Print Button

Send Button

Start Over
Button



Adjustment Tools



Upon starting PhotoFantasy, you may notice that only the Get Fantasy Button is enabled in the Main Screen. This "start-up mode" is designed to help guide you through the steps of creating a photo fantasy, the first step being "Select Your Fantasy". Once this step is completed, the Get Photo Buttons will appear on the Main Screen, prompting you to complete the second step, "Select Your Photo". Once this second step is completed, the rest of the Main Screen options will become available.

Get Fantasy Screen

Clicking the Get Fantasy Button in the Main Screen takes you to the Get Fantasy Screen. Here you can select the fantasy background for your photo fantasy. Chose from over 100 that come with the program, or download more from the Web.

Fantasy Category
Menu

"fantasy slides"

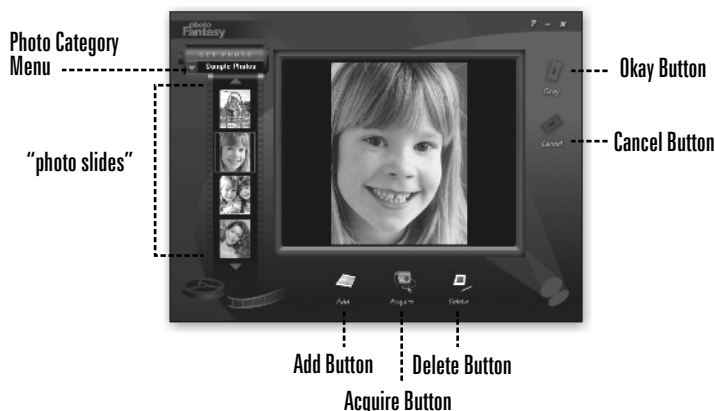


Cancel Button

Okay Button

Get Photo Screen

Clicking the Get Photo Button 1,2 or 3 in the Main Screen takes you to the Get Photo Screen. Here you can choose the photos for your photo fantasy and create new categories of photos.



Print Screen



Once your fantasy is complete, you can send it by e-mail or print it out on your color printer. Now you can prove you have that Jet Fighter license once and for all.



You can learn more about PhotoFantasy by using online Help. Online Help provides easy-to-find information on specific commands and features, and is most helpful when printed out. To access online Help, click the "?" Button at the top right corner of the screen. You will also find a PDF file on the software CD that you can printout if you want a hard copy.

Advanced Tools

- To flip the photo, click the Flip Tool.
- To move the photo in a specific direction, use the Move tools.
- To enlarge or reduce the size of the photo, use the Resize tools.
- To rotate the photo clockwise or counter-clockwise, use the Rotate tools.
- To control the precision of movements, use the Zoom In/Zoom Out tools.
- To add text to your photo, use the Text Tool.
- To automatically match the color of your photo with your fantasy, use the automatic Match Color Tool.
- To adjust the brightness in the entire photo fantasy, use the Brightness Tool.
- To adjust the contrast in the entire photo fantasy, use the Contrast Tool.
- To adjust the saturation in the entire photo fantasy, use the Saturation Tool.



ArcSoft photo Montage™

Welcome to PhotoMontage, the unique imaging entertainment program that lets you turn your favorite digital photos into an eye-catching masterpiece of digital art.

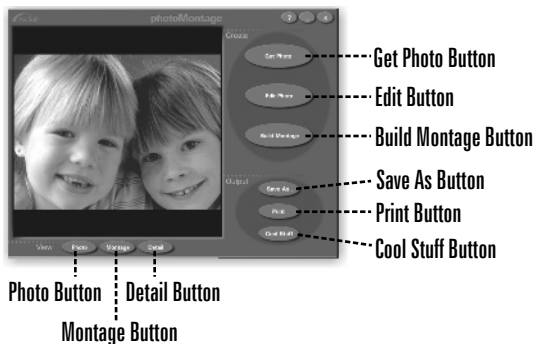


Begin by choosing a main photo, such as a person's face. Then choose the "micro-image" collections with which to build your creation. In just minutes, you will see thousands of miniature images miraculously combine to form a mosaic-like "montage" of your main photo!

Using your color inkjet or laser printer, you can create high-quality mini-posters of your montage for friends and family. Or access ArcSoft's online web services to make full-size posters and other unique digital imaging gifts.

Main Screen

The Main Screen acts as your "homebase" in PhotoMontage. It contains buttons that let you access the other screens, save your montages and make printouts. It also contains a Main Display Area so you can view "before", "after" and detailed versions of your finished montage.



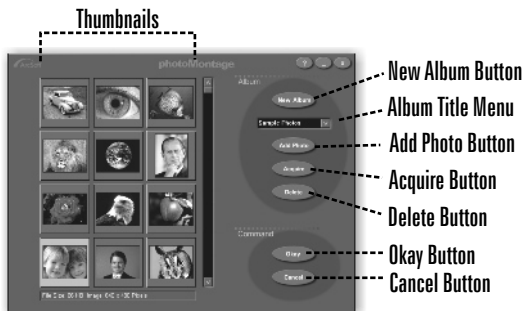
Montage Terms

- **Main Photo** - The single image chosen as the subject of a montage.
- **Micro-images** - The small photos used to build a montage. In general, the more micro-images you use, the sharper the detail in your finished image.
- **Collection** - A group of micro-images. A collection can be created from your own digital images or pre-made by ArcSoft on a CD. Your Ricoh CD contains a starter collection called the "Mega Collection"
- **Montage** - The final image made up of many micro-images. "PhotoMontage" refers to the program.



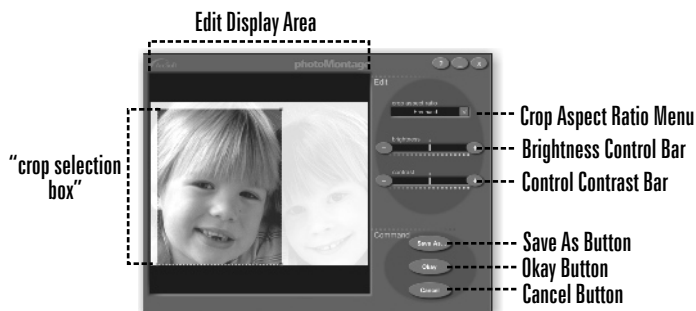
Get Photo Screen

Clicking the Get Photo button in the Main Screen takes you to the Get Photo Screen. Here you can choose the main photo for your montage. You may also create a new album and add and remove thumbnails from the album.



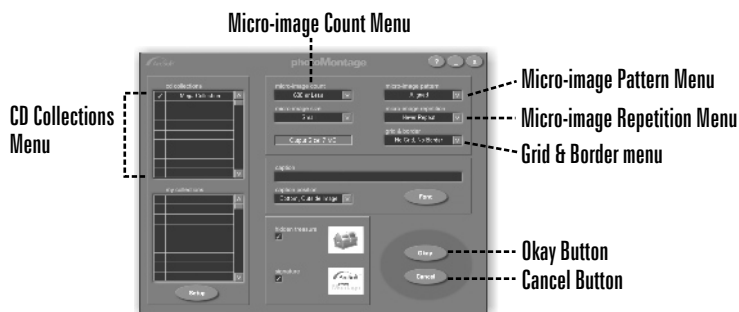
Edit Screen

Clicking the Edit Photo Button in the Main Screen takes you to the Edit Screen. This screen gives you easy-to-use tools for cropping and enhancing your main photo.



Build Screen

Clicking on the Build Montage Button in the Main Screen takes you to the Build Screen. This screen contains several options for preparing your micro-images for rendering. It also contains a Setup Button to take you to the Collection Setup Screen.



Be sure to check out the special PhotoMontage web page, which offers unique program add-ons such as a poster printing service, a library of micro-image collections and other cool imaging gifts. Simply click on the "Cool Stuff" Button on the Main Screen to open the "Special PhotoMontage Services" screen. Then select the online option. Your browser will automatically launch and link you directly to the PhotoMontage web page.



You can learn more about PhotoMontage by using online Help. Online Help provides easy-to-find information on specific commands and features, and is most helpful when printed out. To access online Help, click the "?" Button at the top right corner of the screen. You will also find a PDF file on the software CD that you can printout if you want a hard copy.



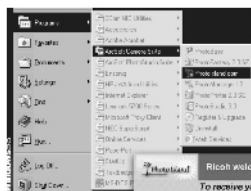
Now there is a place on the Internet where you can keep all your images in custom albums and share them with anyone you want. Whether for business or pleasure, you will find PhotoIsland the best place to share your images.



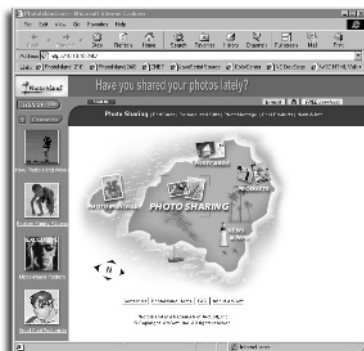
Take advantage of PhotoIsland's free offer for Ricoh customers only and instantly begin sharing your photos today.

Join PhotoIsland.com (www.photoisland.com) today and become a member of the best photo-archiving site on the Internet. Post your digital photos on a secure server and share your favorite memories via PhotoIsland with long distant family members and friends. Get free email, send postcards, create custom photo albums and a whole lot more. Every new member receives 10MB free secured web space, with an unlimited number of photo albums to choose from.

Receive your free PhotoIsland gift by launching PhotoIsland.com from within the Arcsoft Camera Suite Start Menu, or from the PhotoIsland desktop icon. Go to the special promotions area on PhotoIsland for the Ricoh promotional code number.



Ricoh welcomes you to PhotoIsland.com.
To receive your special gift, use the following Special Promotion area of the site.



When you become a member of PhotoIsland, you have full access to a large variety of free interactive features and services that no other photo-sharing site can offer. Take a tour and see for yourself.

Share and Archive Your Favorite Photos

As a member of PhotoIsland securely post, share and store all your photos on-line. Upload images and display them in a secured album for all your friends and family to view. Customize your albums by including a welcome page or customize backgrounds for each of your albums.



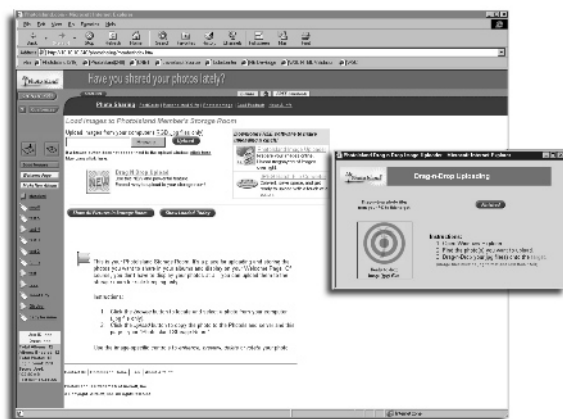


Create Custom Photo Albums

Choose from a wide variety of customized digital photo albums including baby, wedding, honeymoon, vacation, birthday and more. Follow simple steps for uploading photos to each page of the album while adding detailed descriptions to each photo as guided.

Easily Upload all Your Images to Photolsland

Unlike other web sites that require members to upload files one by one, Photolsland lets you drag and drop multiple photos straight from Windows Explorer to your Photolsland Storage Room using Photolsland's Drag and Drop Uploading software program. Use the Photolsland JPG Batch File Converter that comes bundled with the Ricoh camera, and instantly convert multiple images into the web-ready JPG file format.





Instantly Send Personalized Photo Postcards

Send personalized postcards using your own pictures or choose from one of the many postcards provided by PhotoIsland. Send birthday, anniversary, holidays and more. Add music or customized stamps for an added touch.

Get Free Software Downloads

Download new and exciting free software. PhotoIsland will regularly offer different software programs for free downloading and will be added on a monthly basis.



Create PhotoMontage Posters

Order a customized PhotoMontage poster rendered from thousands of micro-images from PhotoIsland. Upload your favorite image to the site and have it recreated using a variety of images including T2 images, "themed" images and more.

photoisland.com

Purchase Personalized Gifts

Purchase unique photo-related gifts like personalized t-shirts, mugs, hats and much more. PhotoIsland also offers hot digital imaging software and hardware related products that can be purchased from its on-line store.



Receive Imaging News and Tips

Check out PhotoIsland for regular digital imaging tips and hints including editorial content from experts, and the latest in digital imaging news.



Receive Free Email

Send teaser photos directly from your PhotoIsland album. Simply select a photo and send it with a personalized message and password to friends and family-- inviting them to view your new photos.

Create Customized Guest Books

Invite guests to view your photo albums and sign your guest book. Visitors can leave messages, notes and comments or leave messages for other visitors.

Easily Enhance Your Images

Once your images are uploaded you can edit them by using the provided photo editing tools like enhancing, rotating and improving the color of your photos.

Create Cool Photo Slide Shows

With just one click, you can easily display your photos one after another in a story-like fashion. Each photo can be accompanied by captions or descriptive text.

Easily Search for Lost Photos

Associate up to six descriptive keywords to each photo for easy searching and sorting. Search your private photo storage room for photos based on filenames, key words and captions.

see you @

 Photo Island.com
Have you shared your photos lately?

NOTES

[illegible]

Power Saving Tips!

Digital cameras go through batteries fairly quickly. Here are some things you can do to make your batteries last.

- The camera's LCD monitor uses the most power. To conserve power, turn off the LCD and use the optical viewfinder instead. This is especially a good idea outdoors, when the sun makes the LCD difficult to see.
- Use the AC adapter that came with your camera whenever possible, especially when downloading files.
- Adjust the camera's power management features to conserve power. See your user's manual for information on how to do this.
- Make sure your battery is completely charged before using.

From the desk of **SCOTT COLLINS**

Things to do today...

- ☒ Buy cool new Ricoh digital camera
- ☒ Impress friends with cool new toy (brag to boss)
- ☒ Get free membership to PhotoSharing web site, PhotoIsland.com
- ☒ Take pictures of dog for wife — upload to PhotoIsland
- ☒ Take pictures at Bob's bachelor party
- ☒ Upload best photos to PhotoIsland
- ☐ Email guest password log-in for all to see
- ☐ Create wedding on-line photo album for bride and groom
- ☐ Make album of kids for in-laws to view on PhotoIsland
- ☒ Download free software from PhotoIsland
- ☐

www.photoisland.com

FJON



see you @

 **PhotoIsland.com**
Have you shared your photos lately?

RICOH[®]
Image Communication
Five Dedrick Place
West Caldwell, NJ 07006
1-888-742-6410